

Product datasheet for **TP304911M**

GKAP1 (NM_025211) Human Recombinant Protein

Product data:

Product Type:	Recombinant Proteins
Description:	Recombinant protein of human G kinase anchoring protein 1 (GKAP1), transcript variant 1, 100 µg
Species:	Human
Expression Host:	HEK293T
Expression cDNA Clone or AA Sequence:	>RC204911 protein sequence Red =Cloning site Green =Tags(s)

MASAVLSSVPTTASRFALLQVDSGSGSDSEPGKKGKGRNTGKSQTLGSKSTTNEKKREKRRKKKEQQQSEA
NELRNLAFFKIPQKSSHAVCNAQHDLPLSNPVQKDSREENWQEWQRDEQLTSEMFEADLEKALLSKLE
YEEHKKEYEDAENTSTQSKVMNKKDKRKNHQGKDRPLTVSLKDFHSEDHISKKTEELSSSQTLSHDGGFF
NRLEDDVHKILIREKRREQLTEYNGTDNCTAHEHNQEVVLKDGRIERLKLLELERKDAEIQKLKNVITQWE
AKYKEVKARNAQLLMLQEGEMKDKAEILLQVDESQSIKNELTIQVTSLHAALEQERSKVVLQAEALAKY
QGGGRKGRNSESDQCR

TRTRPLEQKLISEEDLAANDILDYKDDDDKV

Tag:	C-Myc/DDK
Predicted MW:	41.9 kDa
Concentration:	>0.05 µg/µL as determined by microplate BCA method
Purity:	> 80% as determined by SDS-PAGE and Coomassie blue staining
Buffer:	25 mM Tris-HCl, 100 mM glycine, pH 7.3, 10% glycerol
Preparation:	Recombinant protein was captured through anti-DDK affinity column followed by conventional chromatography steps.
Note:	For testing in cell culture applications, please filter before use. Note that you may experience some loss of protein during the filtration process.
Storage:	Store at -80°C.
Stability:	Stable for 12 months from the date of receipt of the product under proper storage and handling conditions. Avoid repeated freeze-thaw cycles.
RefSeq:	<u>NP_079487</u>



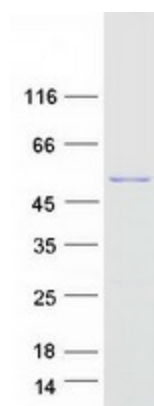
[View online »](#)

Locus ID: 80318
UniProt ID: [Q5VSY0](#)
RefSeq Size: 1891
Cytogenetics: 9q21.32
RefSeq ORF: 1098
Synonyms: FKSG21; GKAP42

Summary: This gene encodes a protein that is highly similar to the mouse cGMP-dependent protein kinase anchoring protein 42kDa. The mouse protein has been found to localize with the Golgi and recruit cGMP-dependent protein kinase I alpha to the Golgi in mouse testes. It is thought to play a role in germ cell development. Transcript variants encoding different isoforms have been found for this gene. [provided by RefSeq, Oct 2008]

Protein Families: Druggable Genome

Product images:



Coomassie blue staining of purified GKAP1 protein (Cat# [TP304911]). The protein was produced from HEK293T cells transfected with GKAP1 cDNA clone (Cat# [RC204911]) using MegaTran 2.0 (Cat# [TT210002]).