

## Product datasheet for TP304911L

### GKAP1 (NM\_025211) Human Recombinant Protein

#### Product data:

Product Type:	Recombinant Proteins
Description:	Recombinant protein of human G kinase anchoring protein 1 (GKAP1), transcript variant 1, 1 mg
Species:	Human
Expression Host:	HEK293T
Expression cDNA Clone or AA Sequence:	<p>&gt;RC204911 protein sequence</p> <p>Red=Cloning site Green=Tags(s)</p> <p>MASAVLSSVPTTASRFALLQVDSGSGSDSEPGKGKGRNTGKSQTLGSKSTTNEKKREKRRKKKEQQQSEA          NELRNLAFFKIPQKSSHAVCNAQHDLPLSNPVQKDSREENWQEWQRDEQLTSEMFEADLEKALLSKL          E          YEEHKKEYEDAENTSTQSKVMNKKDKRKNHQGKDRPLTVSLKDFHSEDHISKTEELSSSQTLSDHGGFF          NRLEDDVHKILIREKRREQLTEYNGTDNCTAHEHNQEVVLKDGRIERLKLLELRKDAEIQKLKNVITQWE          AKYKEVKARNAQLLKMLQEGEMKDKAEILLQVDESQSIKNELTIQVTSLHAALEQERSKVVLQAEALAKY          QGGRKGKRNSESDQCR</p> <p>TRTRPLEQKLISEEDLAANDILDYKDDDDKV</p>
Tag:	C-Myc/DDK
Predicted MW:	41.9 kDa
Concentration:	>0.05 µg/µL as determined by microplate BCA method
Purity:	> 80% as determined by SDS-PAGE and Coomassie blue staining
Buffer:	25 mM Tris-HCl, 100 mM glycine, pH 7.3, 10% glycerol
Preparation:	Recombinant protein was captured through anti-DDK affinity column followed by conventional chromatography steps.
Note:	For testing in cell culture applications, please filter before use. Note that you may experience some loss of protein during the filtration process.
Storage:	Store at -80°C.
Stability:	Stable for 12 months from the date of receipt of the product under proper storage and handling conditions. Avoid repeated freeze-thaw cycles.


[View online »](#)

RefSeq: [NP\\_079487](#)

Locus ID: 80318

UniProt ID: [Q5VSY0](#)

RefSeq Size: 1891

Cytogenetics: 9q21.32

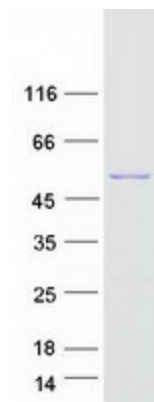
RefSeq ORF: 1098

Synonyms: FKSG21; GKAP42

**Summary:** This gene encodes a protein that is highly similar to the mouse cGMP-dependent protein kinase anchoring protein 42kDa. The mouse protein has been found to localize with the Golgi and recruit cGMP-dependent protein kinase I alpha to the Golgi in mouse testes. It is thought to play a role in germ cell development. Transcript variants encoding different isoforms have been found for this gene. [provided by RefSeq, Oct 2008]

Protein Families: Druggable Genome

### Product images:



Coomassie blue staining of purified GKAP1 protein (Cat# [TP304911]). The protein was produced from HEK293T cells transfected with GKAP1 cDNA clone (Cat# [RC204911]) using MegaTran 2.0 (Cat# [TT210002]).