

Product datasheet for **TP304904M**

SERPINE2 (NM_006216) Human Recombinant Protein

Product data:

Product Type: Recombinant Proteins

Description: Recombinant protein of human serpin peptidase inhibitor, clade E (nexin, plasminogen activator inhibitor type 1), member 2 (SERPINE2), transcript variant 1, 100 µg

Species: Human

Expression Host: HEK293T

Expression cDNA Clone or AA Sequence: >RC204904 protein sequence
Red=Cloning site **Green**=Tags(s)

MNWHLPLFLLASVTLPSICSHFNPLSLEELGSNTGIQVFNQIVKSRPHDNIVISPHGIASVLGMLQLGAD
GRTKKQLAMVMRYGVNGVVGKILKINKAIVSKKNKDIVTVANAVFVKNASEIEVPFVTRNKDVFQCEVRN
VNFEDPASACDSINAWVKNETRDIDNLLSPDLIDGVLTRLVLVNAVYFKGLWKSRLFQENTKKRTFVAA
DGKSYQVPMLAQLSVFRCGSTSAPNDLWYNFIELPYHGESISMLIALPTESSTPLSAIIPHISTKTIDSW
MSIMVPKRVQVILPKFTAQAQDLKEPLKVLGITDMFDSSKANFAKITTGSENLHVSHILQKAKIEVSED
GTKASAATTAILIARSSPPWFIVDRPFLFFIRHNPTGAVLFMGQINKP

TRTRPLEQKLISEEDLAANDILDYKDDDDKV

Tag: C-Myc/DDK

Predicted MW: 41.8 kDa

Concentration: >0.05 µg/µL as determined by microplate BCA method

Purity: > 80% as determined by SDS-PAGE and Coomassie blue staining

Buffer: 25 mM Tris-HCl, 100 mM glycine, pH 7.3, 10% glycerol

Preparation: Recombinant protein was captured through anti-DDK affinity column followed by conventional chromatography steps.

Note: For testing in cell culture applications, please filter before use. Note that you may experience some loss of protein during the filtration process.

Storage: Store at -80°C.

Stability: Stable for 12 months from the date of receipt of the product under proper storage and handling conditions. Avoid repeated freeze-thaw cycles.

RefSeq: [NP_006207](#)



[View online »](#)

Locus ID: 5270

UniProt ID: [P07093](#), [A0A024R451](#)

RefSeq Size: 2259

Cytogenetics: 2q36.1

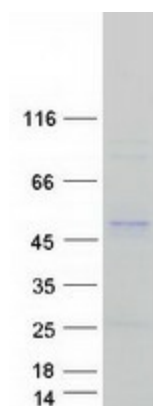
RefSeq ORF: 1194

Synonyms: GDN; GDNPF; PI-7; PI7; PN-1; PN1; PNI

Summary: This gene encodes a member of the serpin family of proteins, a group of proteins that inhibit serine proteases. Thrombin, urokinase, plasmin and trypsin are among the proteases that this family member can inhibit. This gene is a susceptibility gene for chronic obstructive pulmonary disease and for emphysema. Alternative splicing results in multiple transcript variants. [provided by RefSeq, Aug 2012]

Protein Families: Druggable Genome, Secreted Protein

Product images:



Coomassie blue staining of purified SERPINE2 protein (Cat# [TP304904]). The protein was produced from HEK293T cells transfected with SERPINE2 cDNA clone (Cat# [RC204904]) using MegaTran 2.0 (Cat# [TT210002]).