

## Product datasheet for **TP304904L**

### SERPINE2 (NM\_006216) Human Recombinant Protein

#### Product data:

Product Type:	Recombinant Proteins
Description:	Recombinant protein of human serpin peptidase inhibitor, clade E (nexin, plasminogen activator inhibitor type 1), member 2 (SERPINE2), transcript variant 1, 1 mg
Species:	Human
Expression Host:	HEK293T
Expression cDNA Clone or AA Sequence:	>RC204904 protein sequence <b>Red</b> =Cloning site <b>Green</b> =Tags(s)

MNWHLPLFLLASVTLP SICS HFNPLSLEELGSNTGIQVFNQIVKSRPHDNIVISPHG IASVLGMLQLGAD  
GRTKKQLAMVMRYGVNGV GKILKINKAIVSKKNKDIVTVANAVFVKNASEIEVPFVTRNKDVFQCEVRN  
VNFEDPASACDSINAWVKNETRD MIDNLLSPDLIDGVLTRLVLVNAVYFKGLWKS RFQPENTKKRTFVA A  
DGKSYQVPMLAQLSVFRCGSTSAPNDLWYNFIELPYHGESISMLIALPTESSTPLSAIIPHISTKTIDSW  
MSIMVPKRVQVILPKFTA VAQTDLKEPLKVLGITDMFDSSKANFAKITTGSENLHVSHILQKAKIEVSED  
GTKASAATTAILIARSSPPWFIVDRPFLFFIRHNPTGAVLFMGQINKP

**TRTRPLEQKLISEEDLAANDILDYKDDDDKV**

Tag:	C-Myc/DDK
Predicted MW:	41.8 kDa
Concentration:	>0.05 µg/µL as determined by microplate BCA method
Purity:	> 80% as determined by SDS-PAGE and Coomassie blue staining
Buffer:	25 mM Tris-HCl, 100 mM glycine, pH 7.3, 10% glycerol
Preparation:	Recombinant protein was captured through anti-DDK affinity column followed by conventional chromatography steps.
Note:	For testing in cell culture applications, please filter before use. Note that you may experience some loss of protein during the filtration process.
Storage:	Store at -80°C.
Stability:	Stable for 12 months from the date of receipt of the product under proper storage and handling conditions. Avoid repeated freeze-thaw cycles.
RefSeq:	<u><a href="#">NP_006207</a></u>



[View online »](#)

Locus ID: 5270

UniProt ID: [P07093](#), [A0A024R451](#)

RefSeq Size: 2259

Cytogenetics: 2q36.1

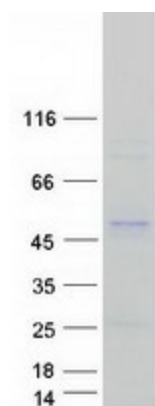
RefSeq ORF: 1194

Synonyms: GDN; GDNPF; PI-7; PI7; PN-1; PN1; PNI

**Summary:** This gene encodes a member of the serpin family of proteins, a group of proteins that inhibit serine proteases. Thrombin, urokinase, plasmin and trypsin are among the proteases that this family member can inhibit. This gene is a susceptibility gene for chronic obstructive pulmonary disease and for emphysema. Alternative splicing results in multiple transcript variants. [provided by RefSeq, Aug 2012]

**Protein Families:** Druggable Genome, Secreted Protein

### Product images:



Coomassie blue staining of purified SERPINE2 protein (Cat# [TP304904]). The protein was produced from HEK293T cells transfected with SERPINE2 cDNA clone (Cat# [RC204904]) using MegaTran 2.0 (Cat# [TT210002]).