

## Product datasheet for **TP304882M**

### Claudin 3 (CLDN3) (NM\_001306) Human Recombinant Protein

#### Product data:

Product Type:	Recombinant Proteins
Description:	Purified recombinant protein of Human claudin 3 (CLDN3), full length, with C-terminal MYC/DDK tag, expressed in HEK293T cells, 100ug
Species:	Human
Expression Host:	HEK293T
Expression cDNA Clone or AA Sequence:	>RC204882 protein sequence <b>Red</b> =Cloning site <b>Green</b> =Tags(s)  MSMGLEITGTALAVLGWLGTIVCCALPMWRVSAFIGSNIITSQNIWEGLWMNCVQSTGQMCKVYDSL L ALPQDLQAARALIVVAILLAAGLLVALVGAQCTNCVQDDTAKAKITIVAGVLFLLAALLTLPVSWSAN TIIRDFYNPVVPEAQKREMGAGLYVGWAAAAALQLLGALLCCSCPPREKKYTATKVVSAPRSTGPGASL GTGYDRKDYY  <b>TRTRPLEQKLISEEDLAANDILDYKDDDDKV</b>
Tag:	C-Myc/DDK
Predicted MW:	23.3 kDa
Concentration:	>50 ug/mL as determined by microplate Bradford method
Purity:	> 80% as determined by SDS-PAGE and Coomassie blue staining
Buffer:	25mM Tris-HCl, pH7.3, 100mM glycine, 10% glycerol
Storage:	Store at -80°C after receiving vials.
Stability:	Stable for at least 1 year from receipt of products under proper storage and handling conditions. Avoid repeated freeze-thaw cycles.
RefSeq:	<u><a href="#">NP_001297</a></u>
Locus ID:	1365
UniProt ID:	<u><a href="#">O15551</a></u> , <u><a href="#">Q75L79</a></u>
RefSeq Size:	1318
Cytogenetics:	7q11.23


[View online »](#)

RefSeq ORF: 660

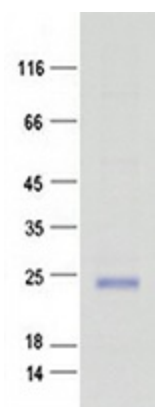
Synonyms: C7orf1; CPE-R2; CPETR2; HRVP1; RVP1

**Summary:** Tight junctions represent one mode of cell-to-cell adhesion in epithelial or endothelial cell sheets, forming continuous seals around cells and serving as a physical barrier to prevent solutes and water from passing freely through the paracellular space. These junctions are comprised of sets of continuous networking strands in the outwardly facing cytoplasmic leaflet, with complementary grooves in the inwardly facing extracytoplasmic leaflet. The protein encoded by this intronless gene, a member of the claudin family, is an integral membrane protein and a component of tight junction strands. It is also a low-affinity receptor for Clostridium perfringens enterotoxin, and shares aa sequence similarity with a putative apoptosis-related protein found in rat. [provided by RefSeq, Jul 2008]

**Protein Families:** Druggable Genome, Transmembrane

**Protein Pathways:** Cell adhesion molecules (CAMs), Leukocyte transendothelial migration, Tight junction

### Product images:



Coomassie blue staining of purified CLDN3 protein (Cat #[TP304882]). The protein was produced from mammalian cells transfected with CLDN3 cDNA clone (Cat #[RC204882]).