

## Product datasheet for **TP304877M**

### GRO beta (CXCL2) (NM\_002089) Human Recombinant Protein

#### Product data:

Product Type:	Recombinant Proteins
Description:	Recombinant protein of human chemokine (C-X-C motif) ligand 2 (CXCL2), 100 µg
Species:	Human
Expression Host:	HEK293T
Expression cDNA Clone or AA Sequence:	>RC204877 protein sequence <b>Red</b> =Cloning site <b>Green</b> =Tags(s)
	MARATLSAAPSNPRLLRVALLLLLLVAASRRRAAGAPLATELRQCQLQTLQGIHLKNIQSVKVKSPGPHCA QTEVIATLKNGQKACLNPASPMVKKIIIEKMLKNGKSN
	<b>TRTRPLEQKLISEEDLAANDILDYKDDDDKV</b>
Tag:	C-Myc/DDK
Predicted MW:	11.2 kDa
Concentration:	>0.05 µg/µL as determined by microplate BCA method
Purity:	> 80% as determined by SDS-PAGE and Coomassie blue staining
Buffer:	25 mM Tris-HCl, 100 mM glycine, pH 7.3, 10% glycerol
Preparation:	Recombinant protein was captured through anti-DDK affinity column followed by conventional chromatography steps.
Note:	For testing in cell culture applications, please filter before use. Note that you may experience some loss of protein during the filtration process.
Storage:	Store at -80°C.
Stability:	Stable for 12 months from the date of receipt of the product under proper storage and handling conditions. Avoid repeated freeze-thaw cycles.
RefSeq:	<a href="#">NP_002080</a>
Locus ID:	2920
UniProt ID:	<a href="#">P19875</a> , <a href="#">A0A024RDD9</a>
RefSeq Size:	1234
Cytogenetics:	4q13.3



[View online »](#)

RefSeq ORF: 321

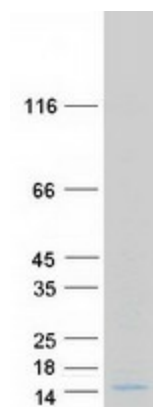
Synonyms: CINC-2a; GRO2; GROb; MGSA-b; MIP-2a; MIP2; MIP2A; SCYB2

**Summary:** This antimicrobial gene is part of a chemokine superfamily that encodes secreted proteins involved in immunoregulatory and inflammatory processes. The superfamily is divided into four subfamilies based on the arrangement of the N-terminal cysteine residues of the mature peptide. This chemokine, a member of the CXC subfamily, is expressed at sites of inflammation and may suppress hematopoietic progenitor cell proliferation. [provided by RefSeq, Sep 2014]

**Protein Families:** Druggable Genome, Secreted Protein

**Protein Pathways:** Chemokine signaling pathway, Cytokine-cytokine receptor interaction, NOD-like receptor signaling pathway

### Product images:



Coomassie blue staining of purified CXCL2 protein (Cat# [TP304877]). The protein was produced from HEK293T cells transfected with CXCL2 cDNA clone (Cat# [RC204877]) using MegaTran 2.0 (Cat# [TT210002]).