

Product datasheet for TP304867M

Septin 2 (SEPT2) (NM_004404) Human Recombinant Protein

Product data:

Product Type: Recombinant Proteins

Description: Recombinant protein of human septin 2 (SEPT2), transcript variant 4, 100 µg

Species: Human

Expression Host: HEK293T

Expression cDNA >RC204867 protein sequence

Clone or AA Red=Cloning site Green=Tags(s)

Sequence:

MSKQQPTQFINPETPGYVGFANLPNQVHRKSVKKGFEFTLMVVGESGLGKSTLINSFLTDLYPERVISG
AAEKIERTVQIEASTVEIEERGVLRLTVWDTPGYGDAINCRDCFKTIISYIDEQFERYLHDESGLNRRH
IIDNRVHCCFYFISPFHGHLKPLDVAFMKAIHNKVNIVPVIKADTLTKERERLKKRILDEIEEHNIKI
YHLPDAESDEDEDLFEQTRLLKASIPFSVGSNQLIEAKGKVKVRGRLYPWGVEVENPEHNDLFLKLRML
ITHMQDLQEVTDLHYENFRSERLKRGRKVENEDMNKDQILLEKEAELRRMQEMIARMQAQMQMGMQGG
DGDGGALGHHV

TRTRPLEQKLISEEDLAANDILDYKDDDDKV

Tag: C-Myc/DDK

Predicted MW: 41.3 kDa

Concentration: >0.05 µg/µL as determined by microplate BCA method

Purity: > 80% as determined by SDS-PAGE and Coomassie blue staining

Buffer: 25 mM Tris-HCl, 100 mM glycine, pH 7.3, 10% glycerol

Preparation: Recombinant protein was captured through anti-DDK affinity column followed by conventional chromatography steps.

Note: For testing in cell culture applications, please filter before use. Note that you may experience some loss of protein during the filtration process.

Storage: Store at -80°C.

Stability: Stable for 12 months from the date of receipt of the product under proper storage and handling conditions. Avoid repeated freeze-thaw cycles.

RefSeq: [NP_004395](#)

Locus ID: 4735



[View online »](#)

UniProt ID: [Q15019](#)

RefSeq Size: 3323

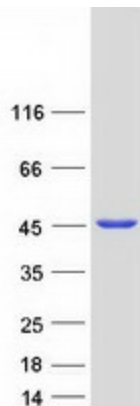
Cytogenetics: 2q37.3

RefSeq ORF: 1083

Synonyms: DIFF6; hNedd5; NEDD-5; NEDD5; Pnutl3; SEPT2

Summary: Filament-forming cytoskeletal GTPase. Forms a filamentous structure with SEPTIN12, SEPTIN6, SEPTIN2 and probably SEPTIN4 at the sperm annulus which is required for the structural integrity and motility of the sperm tail during postmeiotic differentiation (PubMed:25588830). Required for normal organization of the actin cytoskeleton. Plays a role in the biogenesis of polarized columnar-shaped epithelium by maintaining polyglutamylated microtubules, thus facilitating efficient vesicle transport, and by impeding MAP4 binding to tubulin. Required for the progression through mitosis. Forms a scaffold at the midplane of the mitotic spindle required to maintain CENPE localization at kinetochores and consequently chromosome congression. During anaphase, may be required for chromosome segregation and spindle elongation. Plays a role in ciliogenesis and collective cell movements. In cilia, required for the integrity of the diffusion barrier at the base of the primary cilium that prevents diffusion of transmembrane proteins between the cilia and plasma membranes: probably acts by regulating the assembly of the tectonic-like complex (also named B9 complex) by localizing TMEM231 protein. May play a role in the internalization of 2 intracellular microbial pathogens, *Listeria monocytogenes* and *Shigella flexneri*. [UniProtKB/Swiss-Prot Function]

Product images:



Coomassie blue staining of purified SEPTIN2 protein (Cat# [TP304867]). The protein was produced from HEK293T cells transfected with SEPTIN2 cDNA clone (Cat# [RC204867]) using MegaTran 2.0 (Cat# [TT210002]).