

Product datasheet for TP304863

LAGE3 (NM_006014) Human Recombinant Protein

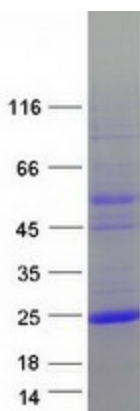
Product data:

Product Type:	Recombinant Proteins
Description:	Purified recombinant protein of Homo sapiens L antigen family, member 3 (LAGE3), 20 µg
Species:	Human
Expression Host:	HEK293T
Expression cDNA	>RC204863 protein sequence
Clone or AA	Red=Cloning site Green=Tags(s)
Sequence:	<p>MRDADADAGGGADGGDGRGGHSCRGVDTAAAPAGGAPPAHAPGPRDAASAARGSRMRPHIFTLSPFP</p> <p>TPLEAEIAHGSLAPDAEPHQRVVGKDLTVSGRILVVRWKAEDCRLLRISVINFLDQLSLVVRTMQRFGPP</p> <p>VSR</p> <p>TRTRPLEQKLISEEDLAANDILDYKDDDDKV</p>
Tag:	C-Myc/DDK
Predicted MW:	14.6 kDa
Concentration:	>0.05 µg/µL as determined by microplate BCA method
Purity:	> 80% as determined by SDS-PAGE and Coomassie blue staining
Buffer:	25 mM Tris-HCl, 100 mM glycine, pH 7.3, 10% glycerol
Preparation:	Recombinant protein was captured through anti-DDK affinity column followed by conventional chromatography steps.
Note:	For testing in cell culture applications, please filter before use. Note that you may experience some loss of protein during the filtration process.
Storage:	Store at -80°C.
Stability:	Stable for 12 months from the date of receipt of the product under proper storage and handling conditions. Avoid repeated freeze-thaw cycles.
RefSeq:	NP_006005
Locus ID:	8270
UniProt ID:	Q14657
RefSeq Size:	964


[View online »](#)

Cytogenetics:	Xq28
RefSeq ORF:	429
Synonyms:	CVG5; DXS9879E; DXS9951E; ESO3; GAMOS2; ITBA2; Pcc1
Summary:	This gene belongs to the ESO/LAGE gene family, members of which are clustered together on chromosome Xq28, and have similar exon-intron structures. Unlike the other family members which are normally expressed only in testis and activated in a wide range of human tumors, this gene is ubiquitously expressed in somatic tissues. The latter, combined with the finding that it is highly conserved in mouse and rat, suggests that the encoded protein is functionally important. An intronless pseudogene with high sequence similarity to this gene is located on chromosome 9. [provided by RefSeq, Jul 2008]

Product images:



Coomassie blue staining of purified LAGE3 protein (Cat# TP304863). The protein was produced from HEK293T cells transfected with LAGE3 cDNA clone (Cat# [RC204863]) using MegaTran 2.0 (Cat# [TT210002]).