

Product datasheet for TP304861

MTF1 (NM_005955) Human Recombinant Protein

Product data:

Product Type:	Recombinant Proteins
Description:	Recombinant protein of human metal-regulatory transcription factor 1 (MTF1), 20 µg
Species:	Human
Expression Host:	HEK293T
Expression cDNA Clone or AA Sequence:	>RC204861 protein sequence Red=Cloning site Green=Tags(s)

MGEHSPDNNIIYFEAEDELTDPDDKMLRFVDKNGLVPSSTGVYDRTTVLIEQDPGTLEDEDDDGQCGEH
LPFLVGGEEGFHLIDHEAMSQGYVQHIISPDQIHLTINPGSTPMPRNIEGATLTLQSECPETKRKEVKRY
QCTFEGCPRTYSTAGNLRTHQKTHRGEYTFVCNQEGCGKAFLTSYSLRIHVRVHTKEKPFECDVQGC
FNTLYRLKAHQRLHTGKTFNCESEGCSKYFTTSLDLRKHIRTHTGEKPFRCDDHDGCGKAFAASHHLKTHV
RHTHTGERPFFCPSNGCEKTFSTQYSLKSHMKGHDNKGHSYNALPQHNGSEDTNHSCLSDLSLLSTDS
RENSSTTQGGDLSTISPAIIFESMFQNSDDTAIQEDPQQTASLTESFNGDAESVSDVPPSTGNSASLSLP
LVLQPLGLSEPPQPLLPAAPSAPPAPSLGPGSQAAFGNPPALLQPPEVPVPHSTQFAANHQEFLPHQP
APQPIVPGLSVAGASASAAVASAVAAPAPPQSTTEPLPAMVQTLPLGANSVLTNNPTITITPTNTAI
LQSSLVMGEQNLQWILNGATSSPQNQEIQQASKVEKVFVFTTAVPVASSPGSSVQQIGLSVPVVIKQEE
ACQCQCACRDSAKERASSRRKGCSSPPPPPEPSPQAPDGPSLQLPAQTFSSAPVPGSSSSTLPS
SCEQSRQ
AETPSDPQTETLSAMDVSEFLSLQSLDTPSNLIPIEALLQGEEMGLTSSFSK

TRTRPLEQKLISEEDLAANDILDYKDDDDKV

Tag:	C-Myc/DDK
Predicted MW:	80.8 kDa
Concentration:	>0.05 µg/µL as determined by microplate BCA method
Purity:	> 80% as determined by SDS-PAGE and Coomassie blue staining
Buffer:	25 mM Tris-HCl, 100 mM glycine, pH 7.3, 10% glycerol
Preparation:	Recombinant protein was captured through anti-DDK affinity column followed by conventional chromatography steps.
Note:	For testing in cell culture applications, please filter before use. Note that you may experience some loss of protein during the filtration process.
Storage:	Store at -80°C.



[View online »](#)

Stability: Stable for 12 months from the date of receipt of the product under proper storage and handling conditions. Avoid repeated freeze-thaw cycles.

RefSeq: [NP_005946](#)

Locus ID: 4520

UniProt ID: [Q14872](#)

RefSeq Size: 7986

Cytogenetics: 1p34.3

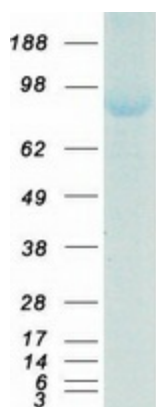
RefSeq ORF: 2259

Synonyms: MTF-1; ZRF

Summary: This gene encodes a transcription factor that induces expression of metallothioneins and other genes involved in metal homeostasis in response to heavy metals such as cadmium, zinc, copper, and silver. The protein is a nucleocytoplasmic shuttling protein that accumulates in the nucleus upon heavy metal exposure and binds to promoters containing a metal-responsive element (MRE). [provided by RefSeq, Jul 2008]

Protein Families: Transcription Factors

Product images:



Coomassie blue staining of purified MTF1 protein (Cat# TP304861). The protein was produced from HEK293T cells transfected with MTF1 cDNA clone (Cat# [RC204861]) using MegaTran 2.0 (Cat# [TT210002]).