

## Product datasheet for **TP304859M**

### SCY1 like 3 (SCYL3) (NM\_020423) Human Recombinant Protein

#### Product data:

Product Type:	Recombinant Proteins
Description:	Recombinant protein of human SCY1-like 3 ( <i>S. cerevisiae</i> ) (SCYL3), transcript variant 1, 100 µg
Species:	Human
Expression Host:	HEK293T
Expression cDNA Clone or AA Sequence:	>RC204859 protein sequence <b>Red</b> =Cloning site <b>Green</b> =Tags(s)

MGSENSALKSYTLREPPFTLPSGLAVYPAVLQDGKFASVFVYKRENEDKVNKA AKHLKTLRHPCLLRFLS  
CTVEADGIHLVTERVQPLEVALETLSAEVCAGIYDILLALIFLHDRGHLTHNNVCLSSVFVSE<sup>Red</sup>DGHWKL  
GGMETVCKVQSQATPEFLRSIQSIRD PASIPPEEMSPEFTTLPECHGHARDAFSFGTLVESLLTILNEQVS  
ADVLLSSFQQLHSTLLNPIPKCRPALCTLLSHDFFRND FLEVNF LKSLTLKSEEEKTEFFKFLDRVSC  
LSEELIASRLVPLLLNQLVFAEPVAVKSF<sup>Green</sup>LPYLLGPKKDHAQGETPCLLSPALFQSRVIPVLLQLFEVHE  
EHVRMVLLSHIEAYVEHFTQEQLKKVILPQVLLGLRDTSDSIVAITLHSLAVLVLLGPEVWVGERTKI  
FKRTAPSFTKNTDLSLEGDPFSQPIKFPINGLS<sup>Red</sup>VDKNTSESENFPSSSKSEEWPDWSEPEEPENQTVN  
IQIWPREPCDDVKSQCTTLDVESSWDDCEPSSLDTKVNPGGGITATKPVTSAEQKPIPALLSLTEESMP  
WKSSLPQKISLVQRGDDADQIEPPKVSSQERPLKVPSELGLGEEFTIQVKKKPKVDP<sup>Green</sup>EMDWFADM<sup>Red</sup>MIPEIK  
PSAAFLILPELRTEMVPKKDDVSPVMQFSSKFAAAEITEGEAEGWEEEGELNWEDNNW

**TRTRPLEQKLISEEDLAANDILDYKDDDDKV**

Tag:	C-Myc/DDK
Predicted MW:	76.6 kDa
Concentration:	>0.05 µg/µL as determined by microplate BCA method
Purity:	> 80% as determined by SDS-PAGE and Coomassie blue staining
Buffer:	25 mM Tris-HCl, 100 mM glycine, pH 7.3, 10% glycerol
Preparation:	Recombinant protein was captured through anti-DDK affinity column followed by conventional chromatography steps.
Note:	For testing in cell culture applications, please filter before use. Note that you may experience some loss of protein during the filtration process.
Storage:	Store at -80°C.



[View online »](#)

**Stability:** Stable for 12 months from the date of receipt of the product under proper storage and handling conditions. Avoid repeated freeze-thaw cycles.

**RefSeq:** [NP\\_065156](#)

**Locus ID:** 57147

**UniProt ID:** [Q8IZE3](#)

**RefSeq Size:** 2928

**Cytogenetics:** 1q24.2

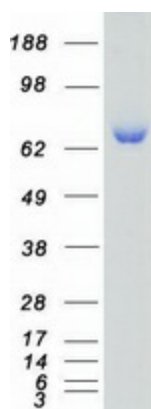
**RefSeq ORF:** 2064

**Synonyms:** PACE-1; PACE1

**Summary:** This gene encodes a protein with a kinase domain and four HEAT repeats. The encoded protein interacts with the C-terminal domain of ezrin, an ERM protein, and may play a role in cell adhesion and migration. Alternative splicing results in multiple transcript variants encoding multiple isoforms. [provided by RefSeq, Jun 2012]

**Protein Families:** Druggable Genome, Protein Kinase

### Product images:



Coomassie blue staining of purified SCYL3 protein (Cat# [TP304859]). The protein was produced from HEK293T cells transfected with SCYL3 cDNA clone (Cat# [RC204859]) using MegaTran 2.0 (Cat# [TT210002]).