

Product datasheet for TP304859

SCY1 like 3 (SCYL3) (NM_020423) Human Recombinant Protein

Product data:

Product Type:	Recombinant Proteins
Description:	Recombinant protein of human SCY1-like 3 (<i>S. cerevisiae</i>) (SCYL3), transcript variant 1, 20 µg
Species:	Human
Expression Host:	HEK293T
Expression cDNA Clone or AA Sequence:	>RC204859 protein sequence Red=Cloning site Green=Tags(s)

MGSENSALKSYTLREPPFTLPSGLAVYPAVLQDGKFAVSVFYKRENEDKVNKA AKHLKTLRHPCLLRFLS
CTVEADGIHLVTERVQPLEVALETLSAEVCAGIYDILLALIFLHDRGHLTHNNVCLSSVFVSE^{Green}DGHWKL
GGMETVCKVSQATPEFLRSIQSIRD PASIPPEEMSPEFTTLPECHGHARDAFSFGTLVESLLTILNEQVS
ADVLS^{Red}SFQQLHSTLLNPIPKCRPALCTLLSHDFFRND^{Red}FLEVNF^{Red}LKSLTKSEEEKTEFFKFL^{Red}LD^{Red}RVSC
LSEELIASRLVPLLLNQLVFAEPVAVKSF^{Red}LPYLLGPKKDHAQGETPCLLSPALFQSRVIVLLQLFEVHE
EHVRMVLLSHIEAYVEHFTQEQLKKVILPQVLLGLRDTSDSIVAITLHSLAVLVLLGPEVWVGERTKI
FKRTAPSFTKNTDLSLEGDPFSQPIKFPINGLS^{Red}VDKNTSE^{Red}SENFPSSSKSEEWPDWSEPEEPENQTVN
IQIWPREPCDDVKSQCTTLDVESSWDDCEPSSLDTKVNP^{Red}GGGITATKPV^{Red}SAEQKIPALLSLTEESMP
WKSSLPQKISLVQRGDDADQIEPPKVSSQERPLKVPSELGLGEEFTIQVKKKPKVDP^{Red}EMDW^{Red}FADM^{Red}PIEIK
PSAAFLILPELRT^{Red}EMV^{Red}PKDDVSPVMQFSSKFAAAEITEGEAEGWEEEGELNWEDNNW

TRTRPLEQKLISEEDLAANDILDYKDDDDKV

Tag:	C-Myc/DDK
Predicted MW:	76.6 kDa
Concentration:	>0.05 µg/µL as determined by microplate BCA method
Purity:	> 80% as determined by SDS-PAGE and Coomassie blue staining
Buffer:	25 mM Tris-HCl, 100 mM glycine, pH 7.3, 10% glycerol
Preparation:	Recombinant protein was captured through anti-DDK affinity column followed by conventional chromatography steps.
Note:	For testing in cell culture applications, please filter before use. Note that you may experience some loss of protein during the filtration process.
Storage:	Store at -80°C.



[View online »](#)

Stability: Stable for 12 months from the date of receipt of the product under proper storage and handling conditions. Avoid repeated freeze-thaw cycles.

RefSeq: [NP_065156](#)

Locus ID: 57147

UniProt ID: [Q8IZE3](#)

RefSeq Size: 2928

Cytogenetics: 1q24.2

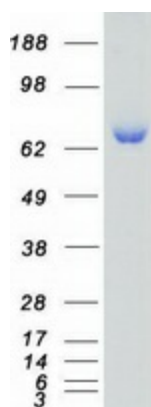
RefSeq ORF: 2064

Synonyms: PACE-1; PACE1

Summary: This gene encodes a protein with a kinase domain and four HEAT repeats. The encoded protein interacts with the C-terminal domain of ezrin, an ERM protein, and may play a role in cell adhesion and migration. Alternative splicing results in multiple transcript variants encoding multiple isoforms. [provided by RefSeq, Jun 2012]

Protein Families: Druggable Genome, Protein Kinase

Product images:



Coomassie blue staining of purified SCYL3 protein (Cat# TP304859). The protein was produced from HEK293T cells transfected with SCYL3 cDNA clone (Cat# [RC204859]) using MegaTran 2.0 (Cat# [TT210002]).