

Product datasheet for **TP304854L**

BRDG 1 (STAP1) (NM_012108) Human Recombinant Protein

Product data:

Product Type:	Recombinant Proteins
Description:	Recombinant protein of human signal transducing adaptor family member 1 (STAP1), 1 mg
Species:	Human
Expression Host:	HEK293T
Expression cDNA Clone or AA Sequence:	>RC204854 protein sequence Red=Cloning site Green=Tags(s)

MMAKKPPKPAPRRIFQERLKITALPLYFEGFLLIKRSQYREYEHYWTELRGTTLFFYTDKKSIIYVDKLD
IVDLTCLTEQNSTEKNCAKFTLVLPKEEVQLKTENTESGEEWRGFILVTLSVPQNVSLLPQVIKLHE
VLEREKKRRIETEQSTSVEKEKEPTEDYVDVLNPMACFYTVSRKEATEMLQKNPSLGNMILRPGSDSRN
YSITIRQEIDIPRIKHYKVMQNYTIELEKPVTLNLFVIDYFVKETRGNLRPFCSTDENTGQEPS
MEGRSEKLKKNPHIA

TRTRPLEQKLISEEDLAANDILDYKDDDDKV

Tag:	C-Myc/DDK
Predicted MW:	34.1 kDa
Concentration:	>0.05 µg/µL as determined by microplate BCA method
Purity:	> 80% as determined by SDS-PAGE and Coomassie blue staining
Buffer:	25 mM Tris-HCl, 100 mM glycine, pH 7.3, 10% glycerol
Preparation:	Recombinant protein was captured through anti-DDK affinity column followed by conventional chromatography steps.
Note:	For testing in cell culture applications, please filter before use. Note that you may experience some loss of protein during the filtration process.
Storage:	Store at -80°C.
Stability:	Stable for 12 months from the date of receipt of the product under proper storage and handling conditions. Avoid repeated freeze-thaw cycles.
RefSeq:	<u>NP_036240</u>
Locus ID:	26228



[View online »](#)

UniProt ID: [Q9ULZ2](#)

RefSeq Size: 1524

Cytogenetics: 4q13.2

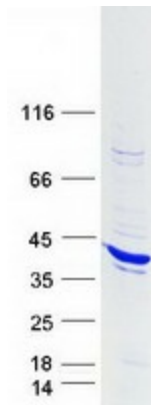
RefSeq ORF: 885

Synonyms: BRDG1; STAP-1

Summary: The protein encoded by this gene contains a proline-rich region, a pleckstrin homology (PH) domain, and a region in the carboxy terminal half with similarity to the Src Homology 2 (SH2) domain. This protein is a substrate of tyrosine-protein kinase Tec, and its interaction with tyrosine-protein kinase Tec is phosphorylation-dependent. This protein is thought to participate in a positive feedback loop by upregulating the activity of tyrosine-protein kinase Tec. Variants of this gene have been associated with autosomal-dominant hypercholesterolemia (ADH), which is characterized by elevated low-density lipoprotein cholesterol levels and in increased risk of coronary vascular disease. Alternative splicing results in multiple transcript variants. [provided by RefSeq, Dec 2015]

Protein Families: Druggable Genome

Product images:



Coomassie blue staining of purified STAP1 protein (Cat# [TP304854]). The protein was produced from HEK293T cells transfected with STAP1 cDNA clone (Cat# [RC204854]) using MegaTran 2.0 (Cat# [TT210002]).