

Product datasheet for **TP304853**

COPZ2 (NM_016429) Human Recombinant Protein

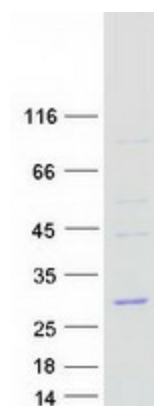
Product data:

Product Type:	Recombinant Proteins
Description:	Recombinant protein of human coatomer protein complex, subunit zeta 2 (COPZ2), 20 µg
Species:	Human
Expression Host:	HEK293T
Expression cDNA Clone or AA Sequence:	>RC204853 protein sequence Red =Cloning site Green =Tags(s)
	<p> MQRPEAWPRPHPGEGAAAAQAGGPAPPARAGEPSGLRLQEPSLYTIKAVFILDNDGRRLLAKYDDTFPS MKEQMVFEKNVFNKTSRTESEIAFFGGMTIVYKNSIDFLYVVGSSYENELMLMSVLTCLFESLNHMLRK NVEKRWLLENMDGAFLVLDEIVDGGVILESDPQQVIQKVNFRADDGGLTEQSVAQVLQSAKEQIKWSLLK TRTRPLEQKLISEEDLAANDILDYKDDDDKV </p>
Tag:	C-Myc/DDK
Predicted MW:	23.4 kDa
Concentration:	>0.05 µg/µL as determined by microplate BCA method
Purity:	> 80% as determined by SDS-PAGE and Coomassie blue staining
Buffer:	25 mM Tris-HCl, 100 mM glycine, pH 7.3, 10% glycerol
Preparation:	Recombinant protein was captured through anti-DDK affinity column followed by conventional chromatography steps.
Note:	For testing in cell culture applications, please filter before use. Note that you may experience some loss of protein during the filtration process.
Storage:	Store at -80°C.
Stability:	Stable for 12 months from the date of receipt of the product under proper storage and handling conditions. Avoid repeated freeze-thaw cycles.
RefSeq:	<u>NP_057513</u>
Locus ID:	51226
UniProt ID:	<u>Q9P299</u>
RefSeq Size:	939


[View online »](#)

Cytogenetics:	17q21.32
RefSeq ORF:	630
Synonyms:	zeta2-COP
Summary:	This gene encodes a member of the adaptor complexes small subunit family. The encoded protein is a subunit of the coatamer protein complex, a seven-subunit complex that functions in the formation of COPI-type, non-clathrin-coated vesicles. COPI vesicles function in the retrograde Golgi-to-ER transport of dilysine-tagged proteins. [provided by RefSeq, Feb 2014]

Product images:



Coomassie blue staining of purified COPZ2 protein (Cat# TP304853). The protein was produced from HEK293T cells transfected with COPZ2 cDNA clone (Cat# [RC204853]) using MegaTran 2.0 (Cat# [TT210002]).