

## Product datasheet for **TP304852**

### Granzyme A (GZMA) (NM\_006144) Human Recombinant Protein

#### Product data:

Product Type:	Recombinant Proteins
Description:	Recombinant protein of human granzyme A (granzyme 1, cytotoxic T-lymphocyte-associated serine esterase 3) (GZMA), 20 µg
Species:	Human
Expression Host:	HEK293T
Expression cDNA Clone or AA Sequence:	>RC204852 protein sequence <b>Red</b> =Cloning site <b>Green</b> =Tags(s)
	MRNSYRFLASSLSVWVSLLLIPEDVCEKIIGGNEVTPHSRPYMVLLSLDRKTCAGALIAKDWVLTAAHC NLNKRSQVILGAHSITREEPTKQIMLVKKEFPYPCYDPATREGDLKLLQLTEKAKINKYVTILHLPKKG DVKPGTMCQVAGWGRTHNSASWSDTLREVNITIIRKVCNDRNHYNFNPVIGMMNMCAGSLRGGRDSCNG DSGSPLLCEGVFRGVTSFGLENKCGDPRGPGVYILLSKKHLNWIIMTIKGA  <b>TRTRPLEQKLISEEDLAANDILDYKDDDDKV</b>
Tag:	C-Myc/DDK
Predicted MW:	28.8 kDa
Concentration:	>0.05 µg/µL as determined by microplate BCA method
Purity:	> 80% as determined by SDS-PAGE and Coomassie blue staining
Buffer:	25 mM Tris-HCl, 100 mM glycine, pH 7.3, 10% glycerol
Preparation:	Recombinant protein was captured through anti-DDK affinity column followed by conventional chromatography steps.
Note:	For testing in cell culture applications, please filter before use. Note that you may experience some loss of protein during the filtration process.
Storage:	Store at -80°C.
Stability:	Stable for 12 months from the date of receipt of the product under proper storage and handling conditions. Avoid repeated freeze-thaw cycles.
RefSeq:	<a href="#">NP_006135</a>
Locus ID:	3001



[View online »](#)

UniProt ID: [P12544](#)

RefSeq Size: 913

Cytogenetics: 5q11.2

RefSeq ORF: 786

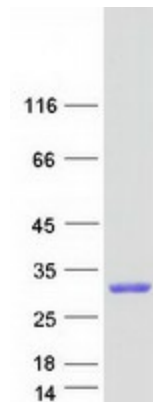
Synonyms: CTLA3; HFSP

**Summary:** Cytolytic T lymphocytes (CTL) and natural killer (NK) cells share the remarkable ability to recognize, bind, and lyse specific target cells. They are thought to protect their host by lysing cells bearing on their surface 'nonself' antigens, usually peptides or proteins resulting from infection by intracellular pathogens. The protein described here is a T cell- and natural killer cell-specific serine protease that may function as a common component necessary for lysis of target cells by cytotoxic T lymphocytes and natural killer cells. [provided by RefSeq, Jul 2008]

**Protein Families:** Druggable Genome, Protease, Secreted Protein

**Protein Pathways:** Neuroactive ligand-receptor interaction

### Product images:



Coomassie blue staining of purified GZMA protein (Cat# TP304852). The protein was produced from HEK293T cells transfected with GZMA cDNA clone (Cat# [RC204852]) using MegaTran 2.0 (Cat# [TT210002]).