

## Product datasheet for **TP304846**

### **SMPDL3B (NM\_001009568) Human Recombinant Protein**

#### Product data:

Product Type:	Recombinant Proteins
Description:	Recombinant protein of human sphingomyelin phosphodiesterase, acid-like 3B (SMPDL3B), transcript variant 2, 20 µg
Species:	Human
Expression Host:	HEK293T
Expression cDNA	>RC204846 protein sequence
Clone or AA Sequence:	Red=Cloning site Green=Tags(s)

MRLLAWLIFLANWGGARAEPGKFWHIADLHLDPDYKVKSKDPFQVCPSAGSQVPDAGPWGDYLCDSPWAL  
INSSIAMKEIEPEPDFILWTGDDTPHVPDEKLGAAVLEIVERLTKLIREVFPDTKVYAALGNHDFHPK  
NQFPAGSNNIYNQIAELWKPWLSNESIALFKKGAFYCEKLPGPSGAGRIVLNTNLYYTSNALTADMADP  
GQQFQWLEDVLT DASKAGDMVYIVGHVPPGFFEKTQNKAWFREGFNEKYLKVVRKHHRVIAGQFFGHHHT  
DSFRMLYDDAGVPISAMFITPGVTPWKTTLPGVVNGANNPAIRVFEYDRATLSLKVRSPAEARGGGWEGL  
KCITTFPHSQLIHLPLTTEPQEG

TRTRPLEQKLISEEDLAANDILDYKDDDDKV

Tag:	C-Myc/DDK
Predicted MW:	41.5 kDa
Concentration:	>0.05 µg/µL as determined by microplate BCA method
Purity:	> 80% as determined by SDS-PAGE and Coomassie blue staining
Buffer:	25 mM Tris-HCl, 100 mM glycine, pH 7.3, 10% glycerol
Preparation:	Recombinant protein was captured through anti-DDK affinity column followed by conventional chromatography steps.
Note:	For testing in cell culture applications, please filter before use. Note that you may experience some loss of protein during the filtration process.
Storage:	Store at -80°C.
Stability:	Stable for 12 months from the date of receipt of the product under proper storage and handling conditions. Avoid repeated freeze-thaw cycles.
RefSeq:	<a href="#">NP_001009568</a>



[View online »](#)

Locus ID: 27293

UniProt ID: [Q92485](#)

RefSeq Size: 1611

Cytogenetics: 1p35.3

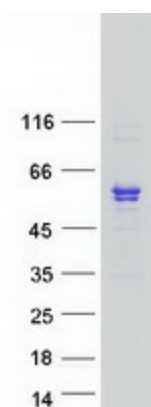
RefSeq ORF: 1119

Synonyms: ASML3B

**Summary:** Lipid-modulating phosphodiesterase (PubMed:26095358). Active on the surface of macrophages and dendritic cells and strongly influences macrophage lipid composition and membrane fluidity. Acts as a negative regulator of Toll-like receptor signaling (By similarity). Has in vitro phosphodiesterase activity, but the physiological substrate is unknown (PubMed:26095358). Lacks activity with phosphocholine-containing lipids, but can cleave CDP-choline, and can release phosphate from ATP and ADP (in vitro) (By similarity).[UniProtKB/Swiss-Prot Function]

**Protein Families:** Secreted Protein

### Product images:



Coomassie blue staining of purified SMPDL3B protein (Cat# TP304846). The protein was produced from HEK293T cells transfected with SMPDL3B cDNA clone (Cat# [RC204846]) using MegaTran 2.0 (Cat# [TT210002]).