

Product datasheet for **TP304842M**

TH1L (NELFCD) (NM_198976) Human Recombinant Protein

Product data:

Product Type: Recombinant Proteins

Description: Recombinant protein of human TH1-like (Drosophila) (TH1L), transcript variant 1, 100 µg

Species: Human

Expression Host: HEK293T

Expression cDNA Clone or AA Sequence: >RC204842 protein sequence
Red=Cloning site **Green**=Tags(s)

MAGAVPGAIMDEDYYGSAAEWGDEADGGQQEDDSGEGEDDAEVQQECLHKFSTRDYIMEPSIFNTLKRYF
QAGGSPENVIQLLSENYTAVAQTVNLLAEWLIQTGVEPVQVQETVENHLKSLLIKHFDPKADSIFTEEG
ETPAWLEQMIAHTTWRDLFYKLAEAHDPDCLMLNFTVKLISDAGYQGEITSVSTACQQLEVFSRVLRTSLA
TILDGGEENLEKNLPEFAKMVCHGEHTYLFQAQAMMSVLAQEEQGGSAVRRIAQEVQRFAQEKGHASQIT
LALGTAASYPRACQALGAMLSK GALNPADITVLFKMFTSMDPPPVELIRVPAFLDLFMQSLFKPGARINQ
DHKHKYIHILAYAASVETWKKNKRSINKDELKSTSKAVETVHNLCENKGAELVAELSTLYQCIRF
PVVAMGVLKWDWTVSEPRYFQLQTDHTPVHLALLDEISTCHQLLHPQVLQLLVKLFETEHSQLDVMQEL
ELKKTLLDRMVHLLSRGYVLPVVSIRKCLEKLDTDISLIRYFVTEVLDVIAPPYTSDFVQLFLPILEND
SIAGTIKTEGEHDPVTEFIAHCKSNFIMVN

TRTRPLEQKLISEEDLAANDILDYKDDDDKV

Tag: C-Myc/DDK

Predicted MW: 66.1 kDa

Concentration: >0.05 µg/µL as determined by microplate BCA method

Purity: > 80% as determined by SDS-PAGE and Coomassie blue staining

Buffer: 25 mM Tris-HCl, 100 mM glycine, pH 7.3, 10% glycerol

Preparation: Recombinant protein was captured through anti-DDK affinity column followed by conventional chromatography steps.

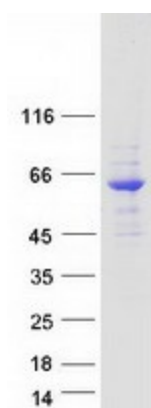
Note: For testing in cell culture applications, please filter before use. Note that you may experience some loss of protein during the filtration process.

Storage: Store at -80°C.



[View online »](#)

Stability:	Stable for 12 months from the date of receipt of the product under proper storage and handling conditions. Avoid repeated freeze-thaw cycles.
RefSeq:	NP_945327
Locus ID:	51497
UniProt ID:	Q8IXH7 , H0UI80
RefSeq Size:	2320
Cytogenetics:	20q13.32
RefSeq ORF:	1770
Synonyms:	HSPC130; NELF-C; NELF-D; TH1; TH1L
Summary:	The NELF complex of proteins interacts with the DSIF protein complex to repress transcriptional elongation by RNA polymerase II. The protein encoded by this gene is an essential part of the NELF complex. Alternative translation initiation site usage results in the formation of two isoforms with different N-termini. [provided by RefSeq, Jul 2008]
Protein Families:	Transcription Factors

Product images:

Coomassie blue staining of purified NELFCD protein (Cat# [TP304842]). The protein was produced from HEK293T cells transfected with NELFCD cDNA clone (Cat# [RC204842]) using MegaTran 2.0 (Cat# [TT210002]).