

Product datasheet for **TP304820**

RRAS (NM_006270) Human Recombinant Protein

Product data:

Product Type:	Recombinant Proteins
Description:	Recombinant protein of human related RAS viral (r-ras) oncogene homolog (RRAS), 20 µg
Species:	Human
Expression Host:	HEK293T
Expression cDNA Clone or AA Sequence:	>RC204820 protein sequence Red =Cloning site Green =Tags(s)
	<p>MSSGAASGTGRGRPRGGGPGDPPPPSETHKLVVGGGGVGSALTIQFIQSYFVSDYDPTIEDSYTKIC SVDGIPARLDILDITAGQEEFGAMREQYMRAGHGFLLVFAINDRQSFNEVGKLFQILRVKDRDDFPVWLV GNKADLESQRQVPRSEASAFGASHHVAYFEASAKRLRLNVDFAFEQLVRAVRKYQEQLPPSPPSAPRKKG GGCPCVLL</p> <p>TRTRPLEQKLISEEDLAANDILDYKDDDDKV</p>
Tag:	C-Myc/DDK
Predicted MW:	23.3 kDa
Concentration:	>0.05 µg/µL as determined by microplate BCA method
Purity:	> 80% as determined by SDS-PAGE and Coomassie blue staining
Buffer:	25 mM Tris-HCl, 100 mM glycine, pH 7.3, 10% glycerol
Preparation:	Recombinant protein was captured through anti-DDK affinity column followed by conventional chromatography steps.
Note:	For testing in cell culture applications, please filter before use. Note that you may experience some loss of protein during the filtration process.
Storage:	Store at -80°C.
Stability:	Stable for 12 months from the date of receipt of the product under proper storage and handling conditions. Avoid repeated freeze-thaw cycles.
RefSeq:	NP_006261
Locus ID:	6237
UniProt ID:	P10301 , A0A024QZF2



[View online »](#)

RefSeq Size: 1013

Cytogenetics: 19q13.33

RefSeq ORF: 654

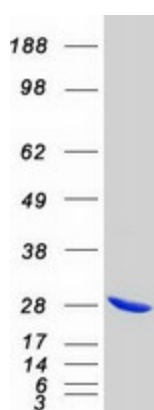
Synonyms: R-Ras

Summary: The protein encoded by this gene is a small GTPase involved in diverse processes including angiogenesis, vascular homeostasis and regeneration, cell adhesion, and neuronal axon guidance. Mutations in this gene are found in many invasive cancers. [provided by RefSeq, Jul 2015]

Protein Families: Druggable Genome

Protein Pathways: MAPK signaling pathway, Regulation of actin cytoskeleton, Tight junction

Product images:



Coomassie blue staining of purified RRAS protein (Cat# TP304820). The protein was produced from HEK293T cells transfected with RRAS cDNA clone (Cat# [RC204820]) using MegaTran 2.0 (Cat# [TT210002]).