

Product datasheet for **TP304810**

CA12 (NM_001218) Human Recombinant Protein

Product data:

Product Type: Recombinant Proteins

Description: Recombinant protein of human carbonic anhydrase XII (CA12), transcript variant 1, 20 µg

Species: Human

Expression Host: HEK293T

Expression cDNA Clone or AA Sequence: >RC204810 protein sequence
Red=Cloning site **Green**=Tags(s)

MPRRSLHAAAVLLLVLKEQPSSPAPVNGSKWTFYFGPDGENSWSKYPSCGGLLQSPIDLHSDILQYDAS
LTPLEFQGYNLSANKQFLLTNNHGSVKLNLPSPDMHIQGLQSRYSATQLHLHWGNPNDPHGSEHTVSGQHF
AAELHIVHYNSDLYPDASTASNKSEGLAVLAVLIEMGSFNPSYDKIFSHLQHVKYKGQEA FVPGFNIEEL
LPERTA EYRYRGS LTPPCNPTVLWTVFRNPVQISQEQLLALETALYCTHMDDPSPREMINNFRQVQKF
DERLVYTSFSQVQVCTAAGLSLGIILSLALAGILGICIVVVSIWLFRRRSIKKGDNKGVIYKPKMET
EAHA

TRTRPLEQKLISEEDLAANDILDYKDDDDKV

Tag: C-Myc/DDK

Predicted MW: 36.8 kDa

Concentration: >0.05 µg/µL as determined by microplate BCA method

Purity: > 80% as determined by SDS-PAGE and Coomassie blue staining

Buffer: 25 mM Tris-HCl, 100 mM glycine, pH 7.3, 10% glycerol

Preparation: Recombinant protein was captured through anti-DDK affinity column followed by conventional chromatography steps.

Note: For testing in cell culture applications, please filter before use. Note that you may experience some loss of protein during the filtration process.

Storage: Store at -80°C.

Stability: Stable for 12 months from the date of receipt of the product under proper storage and handling conditions. Avoid repeated freeze-thaw cycles.

RefSeq: [NP_001209](#)

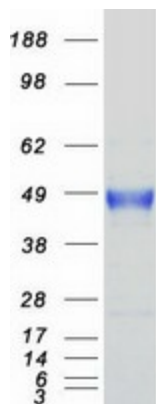
Locus ID: 771



[View online »](#)

UniProt ID:	Q43570
RefSeq Size:	4209
Cytogenetics:	15q22.2
RefSeq ORF:	1062
Synonyms:	CA-XII; CAXII; HsT18816; T18816
Summary:	Carbonic anhydrases (CAs) are a large family of zinc metalloenzymes that catalyze the reversible hydration of carbon dioxide. They participate in a variety of biological processes, including respiration, calcification, acid-base balance, bone resorption, and the formation of aqueous humor, cerebrospinal fluid, saliva, and gastric acid. This gene product is a type I membrane protein that is highly expressed in normal tissues, such as kidney, colon and pancreas, and has been found to be overexpressed in 10% of clear cell renal carcinomas. Three transcript variants encoding different isoforms have been identified for this gene. [provided by RefSeq, Jun 2014]
Protein Families:	Druggable Genome, Transmembrane
Protein Pathways:	Nitrogen metabolism

Product images:



Coomassie blue staining of purified CA12 protein (Cat# TP304810). The protein was produced from HEK293T cells transfected with CA12 cDNA clone (Cat# [RC204810]) using MegaTran 2.0 (Cat# [TT210002]).