

## Product datasheet for **TP304800**

### **C6orf72 (GINM1) (NM\_138785) Human Recombinant Protein**

#### Product data:

**Product Type:** Recombinant Proteins

**Description:** Recombinant protein of human chromosome 6 open reading frame 72 (C6orf72), 20 µg

**Species:** Human

**Expression Host:** HEK293T

**Expression cDNA Clone  
or AA Sequence:** >RC204800 protein sequence  
**Red**=Cloning site **Green**=Tags(s)

MEGAPPGSLALRLLLFVALPASGWLTTGAPEPPPLSGAPQDGIRINVTTLKDDGDISKQQVVLNITYESG  
QVYVNDLPVNSGVTRISCQTLIVKNENLENLEEKEYFGIVSVRILVHEWPMTSGSSLQLIVIQEEVEID  
GKQVQKQDVTEIDILVKNRGLRHSNYTLPLEESMLYSISRSDILFTLPNLSKKESVSSLQTTSQYLIR  
NVETTVDVLPGLPETPLRAEPPSSYKVMCQWMEKFRKDLCRFWSNVFPVFFQLNIMVVGITGAAVV  
ITILKVFFPVSEYKILQLDKVDVIPVTAINLYPDGPEKRAENLEDKTCI

**TRTRPLEQKLISEEDLAANDILDYKDDDDKV**

**Tag:** C-Myc/DDK

**Predicted MW:** 36.7 kDa

**Concentration:** >0.05 µg/µL as determined by microplate BCA method

**Purity:** > 80% as determined by SDS-PAGE and Coomassie blue staining

**Buffer:** 25 mM Tris-HCl, 100 mM glycine, pH 7.3, 10% glycerol

**Preparation:** Recombinant protein was captured through anti-DDK affinity column followed by conventional chromatography steps.

**Note:** For testing in cell culture applications, please filter before use. Note that you may experience some loss of protein during the filtration process.

**Storage:** Store at -80°C.

**Stability:** Stable for 12 months from the date of receipt of the product under proper storage and handling conditions. Avoid repeated freeze-thaw cycles.

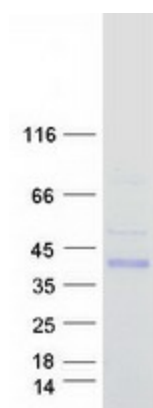
**RefSeq:** [NP\\_620140](#)

**Locus ID:** 116254



[View online »](#)

UniProt ID:	<a href="#">Q9NU53</a>
RefSeq Size:	1138
Cytogenetics:	6q25.1
RefSeq ORF:	990
Synonyms:	C6orf72
Protein Families:	Transmembrane

**Product images:**

Coomassie blue staining of purified GINM1 protein (Cat# TP304800). The protein was produced from HEK293T cells transfected with GINM1 cDNA clone (Cat# [RC204800]) using MegaTran 2.0 (Cat# [TT210002]).