

## Product datasheet for **TP304775L**

### CLTRN (NM\_020665) Human Recombinant Protein

#### Product data:

Product Type:	Recombinant Proteins
Description:	Recombinant protein of human transmembrane protein 27 (TMEM27), 1 mg
Species:	Human
Expression Host:	HEK293T
Expression cDNA Clone or AA Sequence:	>RC204775 protein sequence <b>Red</b> =Cloning site <b>Green</b> =Tags(s)
	 MLWLLFFLVTAIHAELCQPGAENAFKVRLSIRTALGDKAYAWDTNEEYLFKAMVAFSMRKVPNREATEIS HVLLCNVTQRVSFWFVVTDPKSNHTLPAVEVQSAIRMNKNRINNAFFLNDQTLFLKIPSTLAPPMDPSV PIWIIIFGVIFCIIIVAIALLILSGIWQRRRKNKEPSEVDDAEDKCENMITIENGIPSDPLDMKGGHIND AFMTEDERLTPL  <b>TRTRPLEQKLISEEDLAANDILDYKDDDDKV</b>
Tag:	C-Myc/DDK
Predicted MW:	23.5 kDa
Concentration:	>0.05 µg/µL as determined by microplate BCA method
Purity:	> 80% as determined by SDS-PAGE and Coomassie blue staining
Buffer:	25 mM Tris-HCl, 100 mM glycine, pH 7.3, 10% glycerol
Preparation:	Recombinant protein was captured through anti-DDK affinity column followed by conventional chromatography steps.
Note:	For testing in cell culture applications, please filter before use. Note that you may experience some loss of protein during the filtration process.
Storage:	Store at -80°C.
Stability:	Stable for 12 months from the date of receipt of the product under proper storage and handling conditions. Avoid repeated freeze-thaw cycles.
RefSeq:	<u><a href="#">NP_065716</a></u>
Locus ID:	57393
UniProt ID:	<u><a href="#">Q9HBJ8</a></u>



[View online »](#)

RefSeq Size: 1580

Cytogenetics: Xp22.2

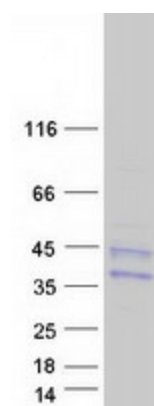
RefSeq ORF: 666

Synonyms: NX-17; NX17; TMEM27

**Summary:** This gene encodes a type 1 transmembrane protein that is important for trafficking amino acid transporters to the apical brush border of proximal tubules. The encoded protein binds to amino acid transporters and regulates their expression on the plasma membrane. It also plays a role in controlling insulin exocytosis by regulating formation of the SNARE (soluble N-ethylmaleimide-sensitive-factor attachment protein receptor) complex in pancreatic beta cells. The extracellular domain of the encoded protein may be cleaved and shed from the plasma membrane specifically in pancreatic beta cells. [provided by RefSeq, Jun 2013]

**Protein Families:** Transmembrane

### Product images:



Coomassie blue staining of purified CLTRN protein (Cat# [TP304775]). The protein was produced from HEK293T cells transfected with CLTRN cDNA clone (Cat# [RC204775]) using MegaTran 2.0 (Cat# [TT210002]).