

## Product datasheet for **TP304756**

### CEP20 (NM\_144600) Human Recombinant Protein

#### Product data:

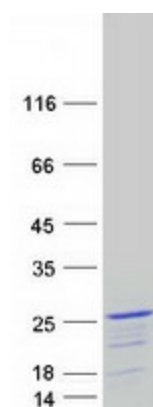
Product Type:	Recombinant Proteins
Description:	Recombinant protein of human chromosome 16 open reading frame 63 (C16orf63), 20 µg
Species:	Human
Expression Host:	HEK293T
Expression cDNA Clone or AA Sequence:	>RC204756 protein sequence <b>Red</b> =Cloning site <b>Green</b> =Tags(s)  MATVAELKAVLKDTLEKKGVLGHLKARIRAEVFNALDDDREPRPSLSHENLLINELIREYLEFNKYKYTA SVLIAESGQPWVPLDRQFLIHELNAFEESKDNTIPLLYGILAHFLRGTKDGIQNAFLKGPSLQPSDPSLG RQPSRRKPMDDHLRKEEQKSTNIEDLHVSQAVNR  <b>TRTRPLEQKLISEEDLAANDILDYKDDDDKV</b>
Tag:	C-Myc/DDK
Predicted MW:	19.6 kDa
Concentration:	>0.05 µg/µL as determined by microplate BCA method
Purity:	> 80% as determined by SDS-PAGE and Coomassie blue staining
Buffer:	25 mM Tris-HCl, 100 mM glycine, pH 7.3, 10% glycerol
Preparation:	Recombinant protein was captured through anti-DDK affinity column followed by conventional chromatography steps.
Note:	For testing in cell culture applications, please filter before use. Note that you may experience some loss of protein during the filtration process.
Storage:	Store at -80°C.
Stability:	Stable for 12 months from the date of receipt of the product under proper storage and handling conditions. Avoid repeated freeze-thaw cycles.
RefSeq:	<u><a href="#">NP_653201</a></u>
Locus ID:	123811
UniProt ID:	<u><a href="#">Q96NB1</a></u>
RefSeq Size:	2250



[View online »](#)

Cytogenetics:	16p13.11
RefSeq ORF:	522
Synonyms:	C16orf63; FOPNL; FOR20; PHSECRG2
Summary:	Involved in the biogenesis of cilia (PubMed:20551181). Required for the recruitment of PLK1 to centrosomes and S phase progression (PubMed:24018379).[UniProtKB/Swiss-Prot Function]

### Product images:



Coomassie blue staining of purified FOPNL protein (Cat# TP304756). The protein was produced from HEK293T cells transfected with FOPNL cDNA clone (Cat# [RC204756]) using MegaTran 2.0 (Cat# [TT210002]).