

## Product datasheet for TP304738L

### C4BPA (NM\_000715) Human Recombinant Protein

#### Product data:

Product Type:	Recombinant Proteins
Description:	Recombinant protein of human complement component 4 binding protein, alpha (C4BPA), 1 mg
Species:	Human
Expression Host:	HEK293T
Expression cDNA Clone or AA Sequence:	>RC204738 protein sequence Red=Cloning site Green=Tags(s)

MHPPKTPSGALHRKRKMAAWPFSRLWKVSDPILFQMTLIAALLPAVLGNCGPPPTLSFAAPMDITLTETR  
FKTGTTLKYTCLPGYVRSHSTQTLTCNSDGEWVYNTFCIYKRCRHPGELRNGQVEIKTDLSEFGSQIEFSC  
SEGFFLIGSTTSRCEVQDRGVGWSHPLPQCEIVKCKPPDIRNGRHSGEENFYAYGFSVTYSCDPRFSL  
GHASICTVENETIGVWRPSPPTCEKITCRKPDVSHGEMVSGFGPIYNYKDTIVFKCQKGFVLRGSSVIH  
CDADSKWNPSPPACEPNSCINLPDIPHASWETYPRPTKEDVYVVGTVLRYRCHPGYKPTTDEPTTVICQK  
NLRWTPYQGCEALCCPEPKLNNGEITQHRKSRPANHCVYFYGDEISFSCHETSRSFAICQGDGTWSPRTP  
SCGDICNFPPKIAHGHYKQSSYSFFKEEIIYECDKGILVQGAKLSCSYSHWSAPAPQCKALCRKPELV  
NGRLSVDKDQYVEPENVTIQCDSGYGVVGPQSITCSGNRTWYPEVPKCEWETPEGCEQVLTGKRLMQCLP  
NPEDVKMALEVYKLSLEIEQLELQRDSARQSTLDKEL

TRTRPLEQKLISEEDLAANDILDYKDDDDKV

Tag:	C-Myc/DDK
Predicted MW:	61.6 kDa
Concentration:	>0.05 µg/µL as determined by microplate BCA method
Purity:	> 80% as determined by SDS-PAGE and Coomassie blue staining
Buffer:	25 mM Tris-HCl, 100 mM glycine, pH 7.3, 10% glycerol
Preparation:	Recombinant protein was captured through anti-DDK affinity column followed by conventional chromatography steps.
Note:	For testing in cell culture applications, please filter before use. Note that you may experience some loss of protein during the filtration process.
Storage:	Store at -80°C.



[View online »](#)

**Stability:** Stable for 12 months from the date of receipt of the product under proper storage and handling conditions. Avoid repeated freeze-thaw cycles.

**RefSeq:** [NP\\_000706](#)

**Locus ID:** 722

**UniProt ID:** [P04003](#)

**RefSeq Size:** 2256

**Cytogenetics:** 1q32.2

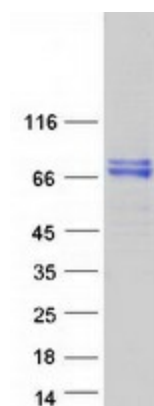
**RefSeq ORF:** 1791

**Synonyms:** C4BP; PRP

**Summary:** This gene encodes a member of a superfamily of proteins composed predominantly of tandemly arrayed short consensus repeats of approximately 60 amino acids. Along with a single, unique beta-chain, seven identical alpha-chains encoded by this gene assemble into the predominant isoform of C4b-binding protein, a multimeric protein that controls activation of the complement cascade through the classical pathway. The genes encoding both alpha and beta chains are located adjacent to each other on human chromosome 1 in the regulator of complement activation gene cluster. Two pseudogenes of this gene are also found in the cluster. [provided by RefSeq, Jul 2008]

**Protein Pathways:** Complement and coagulation cascades

### Product images:



Coomassie blue staining of purified C4BPA protein (Cat# [TP304738]). The protein was produced from HEK293T cells transfected with C4BPA cDNA clone (Cat# [RC204738]) using MegaTran 2.0 (Cat# [TT210002]).