

## Product datasheet for **TP304735M**

### Pancreatic Lipase (PNLIP) (NM\_000936) Human Recombinant Protein

#### Product data:

**Product Type:** Recombinant Proteins

**Description:** Recombinant protein of human pancreatic lipase (PNLIP), 100 µg

**Species:** Human

**Expression Host:** HEK293T

**Expression cDNA Clone or AA Sequence:** >RC204735 protein sequence  
Red=Cloning site Green=Tags(s)

MLPLWTLSELLGAVAGKEVCYERLGCFSDDSPWSGITERPLHILPWSPKDVNTRFLLYTNNPNNFQEVA  
ADSSISGSNFKTRNRKTRFIIHGFIHGFKGEENWLANVCKNLFKVESVNCICVDWKGGSRTGYTQASQNIRI  
VGAEVAYFVEFLQSAFGYSPSNVHVIGHSLGAHAAGEAGRRTNGTIGRITGLDPAEPCFQGTPELVRLDP  
SDAKFVDVIHTDGAPIVNLGFGMSQVVGHLDFPNGGVEMPGCKKNILSQIVDIDGIWEGTRDFAACNH  
LRSYKYYTDSIVNPDGFAGFPCASYNVFTANKCFPCPSGGCPQMGHYADRYPGKTNVGVGQKFLYLDTGAS  
NFARWRYKVSVTLSGKKVTGHILVSLFGNKGNSKQYEIFKGTLPDSTHSNEFSDVDVGDLMVKFIWY  
NNVINPTLPRVGASKIIVETNVGKQFNFCSPETVREEVLLTLTPC

TRTRPLEQKLISEEDLAANDILDYKDDDDKV

**Tag:** C-Myc/DDK

**Predicted MW:** 49.5 kDa

**Concentration:** >0.05 µg/µL as determined by microplate BCA method

**Purity:** > 80% as determined by SDS-PAGE and Coomassie blue staining

**Buffer:** 25 mM Tris-HCl, 100 mM glycine, pH 7.3, 10% glycerol

**Preparation:** Recombinant protein was captured through anti-DDK affinity column followed by conventional chromatography steps.

**Note:** For testing in cell culture applications, please filter before use. Note that you may experience some loss of protein during the filtration process.

**Storage:** Store at -80°C.

**Stability:** Stable for 12 months from the date of receipt of the product under proper storage and handling conditions. Avoid repeated freeze-thaw cycles.

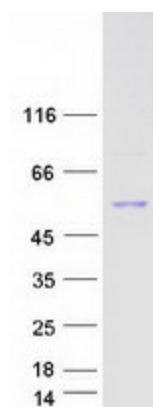
**RefSeq:** [NP\\_000927](#)



[View online »](#)

Locus ID:	5406
UniProt ID:	<a href="#">P16233</a>
RefSeq Size:	1502
Cytogenetics:	10q25.3
RefSeq ORF:	1395
Synonyms:	PL; PNLIPD; PTL
Summary:	This gene encodes a member of the lipase family of proteins. The encoded enzyme is secreted by the pancreas and hydrolyzes triglycerides in the small intestine, and is essential for the efficient digestion of dietary fats. Inhibition of the encoded enzyme may prevent high-fat diet-induced obesity in mice and result in weight loss in human patients with obesity. Mutations in this gene cause congenital pancreatic lipase deficiency, a rare disorder characterized by steatorrhea. [provided by RefSeq, Jul 2016]
Protein Families:	Druggable Genome, Secreted Protein
Protein Pathways:	Glycerolipid metabolism, Metabolic pathways

### Product images:



Coomassie blue staining of purified PNLIP protein (Cat# [TP304735]). The protein was produced from HEK293T cells transfected with PNLIP cDNA clone (Cat# [RC204735]) using MegaTran 2.0 (Cat# [TT210002]).