

## Product datasheet for **TP304735**

### Pancreatic Lipase (PNLIP) (NM\_000936) Human Recombinant Protein

#### Product data:

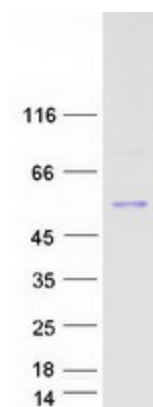
Product Type:	Recombinant Proteins
Description:	Recombinant protein of human pancreatic lipase (PNLIP), 20 µg
Species:	Human
Expression Host:	HEK293T
Expression cDNA Clone or AA Sequence:	>RC204735 protein sequence <b>Red</b> =Cloning site <b>Green</b> =Tags(s)
	<p>MLPLWTLSELLLGA VAGKEVCYERLGCFSDDSPWSGITERPLHILPWSPKDVNTRFLLYTNENPNNFQEVA ADSSISGSGNFKTRNRKTRFIIHGFIKGEENWLANVCKNLFKVESVNCICVDWKGGSRTGYTQASQNIRI VGAEVAYFVEFLQSAFGYSPSNVHVIGHSLGAHAAGEAGRRTNGTIGRITGLDPAEPCFQGTPELVRLDP SDAKFVDVIHTDGAPIVNLGFGMSQVVGHLDFPNGGVEMPGCKKNILSQIVDIDGIWEGTRDFAACNH LRSYKYYTDSIVNPDGFAGFPCASYNVFTANKCFPCPSGGCPQMGHYADRYPGKTNVGVGQKFYLDTGDA NFARWRYKVSVTLSGKKVTGHILVSLFGNKGNSKQYEIFKGTLPDSTHSNEFSDVDVGDLMVKFIWY NNVINPTLPRVGASKIIVETNVGKQFNFCSPETVREEVLLTLTPC</p> <p><b>TRTRPLEQKLISEEDLAANDILDYKDDDDKV</b></p>
Tag:	C-Myc/DDK
Predicted MW:	49.5 kDa
Concentration:	>0.05 µg/µL as determined by microplate BCA method
Purity:	> 80% as determined by SDS-PAGE and Coomassie blue staining
Buffer:	25 mM Tris-HCl, 100 mM glycine, pH 7.3, 10% glycerol
Preparation:	Recombinant protein was captured through anti-DDK affinity column followed by conventional chromatography steps.
Note:	For testing in cell culture applications, please filter before use. Note that you may experience some loss of protein during the filtration process.
Storage:	Store at -80°C.
Stability:	Stable for 12 months from the date of receipt of the product under proper storage and handling conditions. Avoid repeated freeze-thaw cycles.
RefSeq:	<u><a href="#">NP_000927</a></u>



[View online »](#)

Locus ID:	5406
UniProt ID:	<a href="#">P16233</a>
RefSeq Size:	1502
Cytogenetics:	10q25.3
RefSeq ORF:	1395
Synonyms:	PL; PNLIPD; PTL
Summary:	This gene encodes a member of the lipase family of proteins. The encoded enzyme is secreted by the pancreas and hydrolyzes triglycerides in the small intestine, and is essential for the efficient digestion of dietary fats. Inhibition of the encoded enzyme may prevent high-fat diet-induced obesity in mice and result in weight loss in human patients with obesity. Mutations in this gene cause congenital pancreatic lipase deficiency, a rare disorder characterized by steatorrhea. [provided by RefSeq, Jul 2016]
Protein Families:	Druggable Genome, Secreted Protein
Protein Pathways:	Glycerolipid metabolism, Metabolic pathways

### Product images:



Coomassie blue staining of purified PNLIP protein (Cat# TP304735). The protein was produced from HEK293T cells transfected with PNLIP cDNA clone (Cat# [RC204735]) using MegaTran 2.0 (Cat# [TT210002]).