

Product datasheet for TP304730M

C3AR1 (NM_004054) Human Recombinant Protein

Product data:

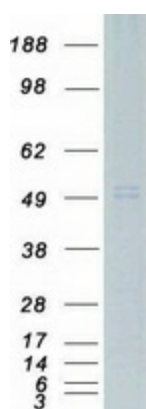
| | |
|---------------------------------------|--|
| Product Type: | Recombinant Proteins |
| Description: | Recombinant protein of human complement component 3a receptor 1 (C3AR1), 100 µg |
| Species: | Human |
| Expression Host: | HEK293T |
| Expression cDNA Clone or AA Sequence: | >RC204730 protein sequence Red =Cloning site Green =Tags(s) |
| | MASFSAETNSTDLLSQPWNEPPVILSMVILSLTFLGLPGNGLVLWVAGLKMQRVTNTIWFHLTLADLL CCLSLPFLAHLALQGQWPYGRFLCKLIPSIIVLNMFASVLLTAISLDRCLVVKPIWCQNHRNVGMAC SICGCIWVAVFVMCIPVFVYREIFTTDNHNRCGYKFLSSSLDYPDFYGDPLENRSLENIVQPPGEMNDR LDPSSFQTN DHPWTVPTVFQPQTFQRPSADSLPRGSARLTSQNLYSNVFKPADVWSPKIPSGFPIEDHET SPLDNDAFLSTHLKLFPSASSNSFYSEL PQGFQDYYNLQGFTDDDQVPTPLVAITITRLVGFLLPSV IMIACYSFIVFRMQRGRFAKSQSKTFRVAVVVAVFLVCWTPYHIFGVLSLLTDPETPLGKTLMSWDHVC IALASANSFNPFYALLGKDFRKKARQSIQGILEAAFSEELTRSTHCPSNNVISERNSTTV |
| | TRTRPLEQKLISEEDLAANDILDYKDDDDKV |
| Tag: | C-Myc/DDK |
| Predicted MW: | 53.7 kDa |
| Concentration: | >0.05 µg/µL as determined by microplate BCA method |
| Purity: | > 80% as determined by SDS-PAGE and Coomassie blue staining |
| Buffer: | 25 mM Tris-HCl, 100 mM glycine, pH 7.3, 10% glycerol |
| Preparation: | Recombinant protein was captured through anti-DDK affinity column followed by conventional chromatography steps. |
| Note: | For testing in cell culture applications, please filter before use. Note that you may experience some loss of protein during the filtration process. |
| Storage: | Store at -80°C. |
| Stability: | Stable for 12 months from the date of receipt of the product under proper storage and handling conditions. Avoid repeated freeze-thaw cycles. |
| RefSeq: | <u>NP_004045</u> |



[View online »](#)

| | |
|-------------------|---|
| Locus ID: | 719 |
| UniProt ID: | Q16581 , A8K2H7 |
| RefSeq Size: | 1985 |
| Cytogenetics: | 12p13.31 |
| RefSeq ORF: | 1446 |
| Synonyms: | AZ3B; C3AR; HNFAG09 |
| Summary: | C3a is an anaphylatoxin released during activation of the complement system. The protein encoded by this gene is an orphan G protein-coupled receptor for C3a. Binding of C3a by the encoded receptor activates chemotaxis, granule enzyme release, superoxide anion production, and bacterial opsonization. [provided by RefSeq, May 2016] |
| Protein Families: | Druggable Genome, GPCR, Transmembrane |
| Protein Pathways: | Complement and coagulation cascades, Neuroactive ligand-receptor interaction |

Product images:



Coomassie blue staining of purified C3AR1 protein (Cat# [TP304730]). The protein was produced from HEK293T cells transfected with C3AR1 cDNA clone (Cat# [RC204730]) using MegaTran 2.0 (Cat# [TT210002]).