

## Product datasheet for TP304730

### C3AR1 (NM\_004054) Human Recombinant Protein

#### Product data:

Product Type:	Recombinant Proteins
Description:	Recombinant protein of human complement component 3a receptor 1 (C3AR1), 20 µg
Species:	Human
Expression Host:	HEK293T
Expression cDNA Clone or AA Sequence:	>RC204730 protein sequence <b>Red</b> =Cloning site <b>Green</b> =Tags(s)

MASFSAETNSTDLLSQPWNEPPVILSMVILSLTFLGLPGNGLVLVWAGLKMQRVNTIWFHLHLTLADLL  
CCLSLPFLAHLALQGQWPYGRFLCKLIPSIIVLNMFASVLLTAISLDRCLLVFKPIWCQNHRNVGMAC  
SICGCIWVAFVMCIPVFVYREIFTTDNHNRCGYKFLGSSLDYDPDFYGDPLENRSLENIVQPPGEMNDR  
LDPSSFQTNHPWTVPTVFQPTFQRPSADSLPRGSARLTSQNLYSNVFKPADVVSFKIPSGFPIEDHET  
SPLDNSDAFLSTHLKLFPSASSNSFYESELQGFQDYNNLQGFTDDDQVPTPLVAITITRLVWGFLLPV  
IMIACYSFIVFRMQRGRFAKSQSKTFRVAVVVAVFLVCWTPYHIFGVLSLLTDPETPLGKTLMSWDHVC  
IALASANSFCNPFLYALLGKDFRKKARQSIQGILEAAFSEELRSTHCPSSNNVISERNSTTV

**TRTRPLEQKLISEEDLAANDILDYKDDDDKV**

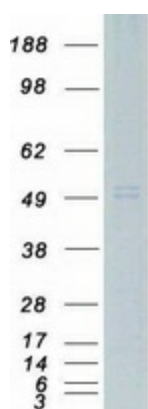
Tag:	C-Myc/DDK
Predicted MW:	53.7 kDa
Concentration:	>0.05 µg/µL as determined by microplate BCA method
Purity:	> 80% as determined by SDS-PAGE and Coomassie blue staining
Buffer:	25 mM Tris-HCl, 100 mM glycine, pH 7.3, 10% glycerol
Preparation:	Recombinant protein was captured through anti-DDK affinity column followed by conventional chromatography steps.
Note:	For testing in cell culture applications, please filter before use. Note that you may experience some loss of protein during the filtration process.
Storage:	Store at -80°C.
Stability:	Stable for 12 months from the date of receipt of the product under proper storage and handling conditions. Avoid repeated freeze-thaw cycles.
RefSeq:	<u><a href="#">NP_004045</a></u>



[View online »](#)

Locus ID:	719
UniProt ID:	<a href="#">Q16581</a>
RefSeq Size:	1985
Cytogenetics:	12p13.31
RefSeq ORF:	1446
Synonyms:	AZ3B; C3AR; HNFAG09
Summary:	C3a is an anaphylatoxin released during activation of the complement system. The protein encoded by this gene is an orphan G protein-coupled receptor for C3a. Binding of C3a by the encoded receptor activates chemotaxis, granule enzyme release, superoxide anion production, and bacterial opsonization. [provided by RefSeq, May 2016]
Protein Families:	Druggable Genome, GPCR, Transmembrane
Protein Pathways:	Complement and coagulation cascades, Neuroactive ligand-receptor interaction

### Product images:



Coomassie blue staining of purified C3AR1 protein (Cat# TP304730). The protein was produced from HEK293T cells transfected with C3AR1 cDNA clone (Cat# [RC204730]) using MegaTran 2.0 (Cat# [TT210002]).