

Product datasheet for **TP304723M**

SH2D1A (NM_002351) Human Recombinant Protein

Product data:

| | |
|---------------------------------------|---|
| Product Type: | Recombinant Proteins |
| Description: | Recombinant protein of human SH2 domain protein 1A (SH2D1A), transcript variant 1, 100 µg |
| Species: | Human |
| Expression Host: | HEK293T |
| Expression cDNA Clone or AA Sequence: | >RC204723 protein sequence Red =Cloning site Green =Tags(s) |
| | MDAVAVYHGKISRETGEKLLLATGLDGSYLLRDSSEVPGVYCLCVLYHGYYTYRVSQTETGSWSAETAP GVHKRYFRKIKNLISAFQKPDQGIVIPLOYPVEKKSSARSTQGTTGIREDPDVCLKAP TRTRPLEQKLISEEDLAANDILDYKDDDDKV |
| Tag: | C-Myc/DDK |
| Predicted MW: | 14 kDa |
| Concentration: | >0.05 µg/µL as determined by microplate BCA method |
| Purity: | > 80% as determined by SDS-PAGE and Coomassie blue staining |
| Buffer: | 25 mM Tris-HCl, 100 mM glycine, pH 7.3, 10% glycerol |
| Preparation: | Recombinant protein was captured through anti-DDK affinity column followed by conventional chromatography steps. |
| Note: | For testing in cell culture applications, please filter before use. Note that you may experience some loss of protein during the filtration process. |
| Storage: | Store at -80°C. |
| Stability: | Stable for 12 months from the date of receipt of the product under proper storage and handling conditions. Avoid repeated freeze-thaw cycles. |
| RefSeq: | NP_002342 |
| Locus ID: | 4068 |
| UniProt ID: | O60880 |
| RefSeq Size: | 2523 |
| Cytogenetics: | Xq25 |



[View online »](#)

RefSeq ORF: 384

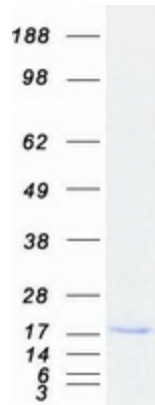
Synonyms: DSHP; EBVS; IMD5; LYP; MTCP1; SAP; SAP/SH2D1A; XLP; XLPD; XLPD1

Summary: This gene encodes a protein that plays a major role in the bidirectional stimulation of T and B cells. This protein contains an SH2 domain and a short tail. It associates with the signaling lymphocyte-activation molecule, thereby acting as an inhibitor of this transmembrane protein by blocking the recruitment of the SH2-domain-containing signal-transduction molecule SHP-2 to its docking site. This protein can also bind to other related surface molecules that are expressed on activated T, B and NK cells, thereby modifying signal transduction pathways in these cells. Mutations in this gene cause lymphoproliferative syndrome X-linked type 1 or Duncan disease, a rare immunodeficiency characterized by extreme susceptibility to infection with Epstein-Barr virus, with symptoms including severe mononucleosis and malignant lymphoma. Multiple transcript variants encoding different isoforms have been found for this gene. [provided by RefSeq, Jul 2008]

Protein Families: Druggable Genome

Protein Pathways: Natural killer cell mediated cytotoxicity

Product images:



Coomassie blue staining of purified SH2D1A protein (Cat# [TP304723]). The protein was produced from HEK293T cells transfected with SH2D1A cDNA clone (Cat# [RC204723]) using MegaTran 2.0 (Cat# [TT210002]).