

Product datasheet for **TP304723L**

SH2D1A (NM_002351) Human Recombinant Protein

Product data:

Product Type:	Recombinant Proteins
Description:	Recombinant protein of human SH2 domain protein 1A (SH2D1A), transcript variant 1, 1 mg
Species:	Human
Expression Host:	HEK293T
Expression cDNA Clone or AA Sequence:	>RC204723 protein sequence Red =Cloning site Green =Tags(s)
	 MDAVAVYHGKISRETGEKLLLATGLDGSYLLRDSSEVPGVYCLCVLYHGYYTYRVSQTETGSSWAETAP GVHKRYFRKIKNLISAFQKPDQGIPIPLQYPVEKKSSARSTQGTTGIREDPDVCLKAP TRTRPLEQKLISEEDLAANDILDYKDDDDKV
Tag:	C-Myc/DDK
Predicted MW:	14 kDa
Concentration:	>0.05 µg/µL as determined by microplate BCA method
Purity:	> 80% as determined by SDS-PAGE and Coomassie blue staining
Buffer:	25 mM Tris-HCl, 100 mM glycine, pH 7.3, 10% glycerol
Preparation:	Recombinant protein was captured through anti-DDK affinity column followed by conventional chromatography steps.
Note:	For testing in cell culture applications, please filter before use. Note that you may experience some loss of protein during the filtration process.
Storage:	Store at -80°C.
Stability:	Stable for 12 months from the date of receipt of the product under proper storage and handling conditions. Avoid repeated freeze-thaw cycles.
RefSeq:	NP_002342
Locus ID:	4068
UniProt ID:	O60880
RefSeq Size:	2523
Cytogenetics:	Xq25



[View online »](#)

RefSeq ORF: 384

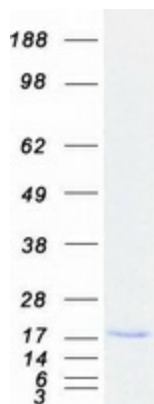
Synonyms: DSHP; EBVS; IMD5; LYP; MTCP1; SAP; SAP/SH2D1A; XLP; XLPD; XLPD1

Summary: This gene encodes a protein that plays a major role in the bidirectional stimulation of T and B cells. This protein contains an SH2 domain and a short tail. It associates with the signaling lymphocyte-activation molecule, thereby acting as an inhibitor of this transmembrane protein by blocking the recruitment of the SH2-domain-containing signal-transduction molecule SHP-2 to its docking site. This protein can also bind to other related surface molecules that are expressed on activated T, B and NK cells, thereby modifying signal transduction pathways in these cells. Mutations in this gene cause lymphoproliferative syndrome X-linked type 1 or Duncan disease, a rare immunodeficiency characterized by extreme susceptibility to infection with Epstein-Barr virus, with symptoms including severe mononucleosis and malignant lymphoma. Multiple transcript variants encoding different isoforms have been found for this gene. [provided by RefSeq, Jul 2008]

Protein Families: Druggable Genome

Protein Pathways: Natural killer cell mediated cytotoxicity

Product images:



Coomassie blue staining of purified SH2D1A protein (Cat# [TP304723]). The protein was produced from HEK293T cells transfected with SH2D1A cDNA clone (Cat# [RC204723]) using MegaTran 2.0 (Cat# [TT210002]).