

Product datasheet for TP304717

IGSF6 (NM_005849) Human Recombinant Protein

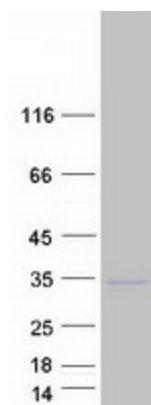
Product data:

Product Type:	Recombinant Proteins
Description:	Recombinant protein of human immunoglobulin superfamily, member 6 (IGSF6), 20 µg
Species:	Human
Expression Host:	HEK293T
Expression cDNA Clone or AA Sequence:	>RC204717 protein sequence Red=Cloning site Green=Tags(s)
	MGTASRSNIARHLQTNLILFCVGAVGACTLSVTQPWYLEVDYTHEAVTIKCTFSATGCPSEQPTCLWFRY GAHRPENLCLDGCKSEADKFTVREALKENQVSLTVNRVTSNDSAIYICGIAFPSVPEARAKQTGGGTTLV VREIKLLSKELRSFLTALVSLLSVYVTGVCVAFILLSKSKSNPLRNKKIKEDSQKKKSARRIFQEIAQEL YKRRHVETNQQSEKDNNTYENRRVLSNYERP
	TRTRPLEQKLISEEDLAANDILDYKDDDDKV
Tag:	C-Myc/DDK
Predicted MW:	24.1 kDa
Concentration:	>0.05 µg/µL as determined by microplate BCA method
Purity:	> 80% as determined by SDS-PAGE and Coomassie blue staining
Buffer:	25 mM Tris-HCl, 100 mM glycine, pH 7.3, 10% glycerol
Preparation:	Recombinant protein was captured through anti-DDK affinity column followed by conventional chromatography steps.
Note:	For testing in cell culture applications, please filter before use. Note that you may experience some loss of protein during the filtration process.
Storage:	Store at -80°C.
Stability:	Stable for 12 months from the date of receipt of the product under proper storage and handling conditions. Avoid repeated freeze-thaw cycles.
RefSeq:	NP_005840
Locus ID:	10261
UniProt ID:	O95976



[View online »](#)

RefSeq Size:	1062
Cytogenetics:	16p12.2
RefSeq ORF:	723
Synonyms:	DORA
Protein Families:	Transmembrane

Product images:

Coomassie blue staining of purified IGSF6 protein (Cat# TP304717). The protein was produced from HEK293T cells transfected with IGSF6 cDNA clone (Cat# [RC204717]) using MegaTran 2.0 (Cat# [TT210002]).