

Product datasheet for **TP304716**

CH25H (NM_003956) Human Recombinant Protein

Product data:

Product Type: Recombinant Proteins

Description: Recombinant protein of human cholesterol 25-hydroxylase (CH25H), 20 µg

Species: Human

Expression Host: HEK293T

**Expression cDNA Clone
or AA Sequence:** >RC204716 protein sequence
Red=Cloning site **Green**=Tags(s)

MSCHNCSDPQVLCSSGQLFLQPLWDHLRSWEALLQSPFFPVIFSITTYVGFCLPFVVDILCSWVPALRR
YKIHPDFPSAQQLPCLGQTLYQHVMFVFPVTLHWHARSPALLPHEAPELLLLLHHILFCLLLFDMEFF
VWHLHKKVPWLYRTHFKVHHQNSSSFALATQYMSVWELFSLGFFDMMNVTLGCHPLTTLTFHVNIWL
SVEDHSGYNFPWSTHRLVDPFGWYGGVHHDLHSHFNCFAPYFTHWDKILGTLRTASVPAR

TRTRPLEQKLISEEDLAANDILDYKDDDDKV

Tag: C-Myc/DDK

Predicted MW: 31.6 kDa

Concentration: >0.05 µg/µL as determined by microplate BCA method

Purity: > 80% as determined by SDS-PAGE and Coomassie blue staining

Buffer: 25 mM Tris-HCl, 100 mM glycine, pH 7.3, 10% glycerol

Preparation: Recombinant protein was captured through anti-DDK affinity column followed by conventional chromatography steps.

Note: For testing in cell culture applications, please filter before use. Note that you may experience some loss of protein during the filtration process.

Storage: Store at -80°C.

Stability: Stable for 12 months from the date of receipt of the product under proper storage and handling conditions. Avoid repeated freeze-thaw cycles.

RefSeq: [NP_003947](#)

Locus ID: 9023

UniProt ID: [O95992](#)



[View online »](#)

RefSeq Size: 1378

Cytogenetics: 10q23.31

RefSeq ORF: 816

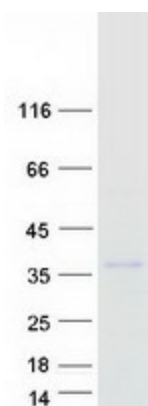
Synonyms: C25H

Summary: This is an intronless gene that is involved in cholesterol and lipid metabolism. The encoded protein is a membrane protein and contains clusters of histidine residues essential for catalytic activity. Unlike most other sterol hydroxylases, this enzyme is a member of a small family of enzymes that utilize diiron cofactors to catalyze the hydroxylation of hydrophobic substrates. [provided by RefSeq, Jul 2008]

Protein Families: Transmembrane

Protein Pathways: Primary bile acid biosynthesis

Product images:



Coomassie blue staining of purified CH25H protein (Cat# TP304716). The protein was produced from HEK293T cells transfected with CH25H cDNA clone (Cat# [RC204716]) using MegaTran 2.0 (Cat# [TT210002]).