

Product datasheet for **TP304704M**

LOX 1 (OLR1) (NM_002543) Human Recombinant Protein

Product data:

Product Type:	Recombinant Proteins
Description:	Recombinant protein of human oxidized low density lipoprotein (lectin-like) receptor 1 (OLR1), 100 µg
Species:	Human
Expression Host:	HEK293T
Expression cDNA Clone or AA Sequence:	>RC204704 protein sequence Red =Cloning site Green =Tags(s)

MTFDDLKIQTVKDQPDEKSNKKKAKGLQFLYSPWWCLAAATLGVLCLGLVVTIMVLGMQLSQVSDLLTQE
QANLTHQKKKLEGQISARQQAEEASQSENELKEMIETLARKLNEKSKEQMELHHQNLNLQETLKRVANC
SAPCPQDWIWHGENCYLFSSGSFNWEKSQEKCLSLDAKLLKINSTADLDFIQQAISYSSFPFWMGLSRRN
PSYPWLWEDGSPMLPHLFRVRGAVSQTYPSGTCAIYIQRGAVYAENCILAAFSICQKKANLRAQ

TRTRPLEQKLISEEDLAANDILDYKDDDDKV

Tag:	C-Myc/DDK
Predicted MW:	30.8 kDa
Concentration:	>0.05 µg/µL as determined by microplate BCA method
Purity:	> 80% as determined by SDS-PAGE and Coomassie blue staining
Buffer:	25 mM Tris-HCl, 100 mM glycine, pH 7.3, 10% glycerol
Bioactivity:	Binding assay (PMID: 28377266)
Preparation:	Recombinant protein was captured through anti-DDK affinity column followed by conventional chromatography steps.
Note:	For testing in cell culture applications, please filter before use. Note that you may experience some loss of protein during the filtration process.
Storage:	Store at -80°C.
Stability:	Stable for 12 months from the date of receipt of the product under proper storage and handling conditions. Avoid repeated freeze-thaw cycles.
RefSeq:	NP_002534



[View online »](#)

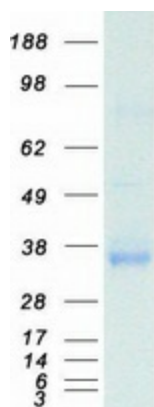
Locus ID: 4973
UniProt ID: [P78380](#), [A0A024RAU0](#)
RefSeq Size: 2533
Cytogenetics: 12p13.2
RefSeq ORF: 819
Synonyms: CLEC8A; LOX1; LOXIN; SCARE1; SLOX1

Summary: This gene encodes a low density lipoprotein receptor that belongs to the C-type lectin superfamily. This gene is regulated through the cyclic AMP signaling pathway. The encoded protein binds, internalizes and degrades oxidized low-density lipoprotein. This protein may be involved in the regulation of Fas-induced apoptosis. This protein may play a role as a scavenger receptor. Mutations of this gene have been associated with atherosclerosis, risk of myocardial infarction, and may modify the risk of Alzheimer's disease. Alternate splicing results in multiple transcript variants.[provided by RefSeq, Feb 2010]

Protein Families: Druggable Genome, Secreted Protein, Transmembrane

Protein Pathways: PPAR signaling pathway

Product images:



Coomassie blue staining of purified OLR1 protein (Cat# [TP304704]). The protein was produced from HEK293T cells transfected with OLR1 cDNA clone (Cat# [RC204704]) using MegaTran 2.0 (Cat# [TT210002]).