

Product datasheet for **TP304699L**

beta Sarcoglycan (SGCB) (NM_000232) Human Recombinant Protein

Product data:

Product Type:	Recombinant Proteins
Description:	Recombinant protein of human sarcoglycan, beta (43kDa dystrophin-associated glycoprotein) (SGCB), 1 mg
Species:	Human
Expression Host:	HEK293T
Expression cDNA Clone or AA Sequence:	>RC204699 protein sequence Red =Cloning site Green =Tags(s)

MAAAAAAAAEQSSNGPVKKSMREKAVERRSVNKEHNSNFKAGYIPIDEDRLHKTGLRGRKGNLAICVII
 LLFILAVINLIITLVIWAVIRIGPNGCDSMEFHESGLLRFKQVSDMGVIHPLYKSTVGGRNENLVITGN
 NQPIVFQQTGTTKLSVENNKTSITSDIGMQFFDPRTQNILFSTDYETHEFHLPSGVKSLNVQKASTERITS
 NATSDLNIKVDGRAIVRGNEGVFIMGKTIEFHMGGNMELKAENSIILNGSVMVSTTRLPSSSSGDQLGSG
 DWVRYKLCMCADGTLFKVQVTSQNMGCQISDNPCGNTH

TRTRPLEQKLISEEDLAANDILDYKDDDDKV

Tag:	C-Myc/DDK
Predicted MW:	34.6 kDa
Concentration:	>0.05 µg/µL as determined by microplate BCA method
Purity:	> 80% as determined by SDS-PAGE and Coomassie blue staining
Buffer:	25 mM Tris-HCl, 100 mM glycine, pH 7.3, 10% glycerol
Preparation:	Recombinant protein was captured through anti-DDK affinity column followed by conventional chromatography steps.
Note:	For testing in cell culture applications, please filter before use. Note that you may experience some loss of protein during the filtration process.
Storage:	Store at -80°C.
Stability:	Stable for 12 months from the date of receipt of the product under proper storage and handling conditions. Avoid repeated freeze-thaw cycles.
RefSeq:	<u>NP_000223</u>
Locus ID:	6443


[View online »](#)

UniProt ID: [Q16585](#), [Q5U0N0](#)

RefSeq Size: 4295

Cytogenetics: 4q12

RefSeq ORF: 954

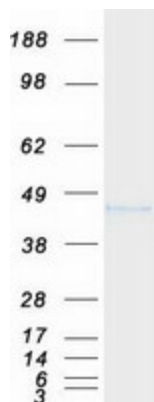
Synonyms: A3b; LGMD2E; LGMDR4; SGC

Summary: This gene encodes a member of the sarcoglycan family. Sarcoglycans are transmembrane components in the dystrophin-glycoprotein complex which help stabilize the muscle fiber membranes and link the muscle cytoskeleton to the extracellular matrix. Mutations in this gene have been associated with limb-girdle muscular dystrophy.[provided by RefSeq, Oct 2008]

Protein Families: Druggable Genome, Transmembrane

Protein Pathways: Arrhythmogenic right ventricular cardiomyopathy (ARVC), Dilated cardiomyopathy, Hypertrophic cardiomyopathy (HCM), Viral myocarditis

Product images:



Coomassie blue staining of purified SGCB protein (Cat# [TP304699]). The protein was produced from HEK293T cells transfected with SGCB cDNA clone (Cat# [RC204699]) using MegaTran 2.0 (Cat# [TT210002]).