

Product datasheet for **TP304697M**

SLPI (NM_003064) Human Recombinant Protein

Product data:

| | |
|---------------------------------------|--|
| Product Type: | Recombinant Proteins |
| Description: | Recombinant protein of human secretory leukocyte peptidase inhibitor (SLPI), 100 µg |
| Species: | Human |
| Expression Host: | HEK293T |
| Expression cDNA Clone or AA Sequence: | >RC204697 protein sequence Red =Cloning site Green =Tags(s) |
| | MKSSGLFPFLVLLALGTLAPWAVEGSGKSFKAGVCPPKKSQAQLRYKKPECQSDWQCPGKKRCCPDTCGI KCLDPVDTPNPTRRRKPGKCPVTYGQCLMLNPPNFCMDGQCKRDLKCCMGMCVKSCVSPVKA |
| | TRTRPLEQKLISEEDLAANDILDYKDDDDKV |
| Tag: | C-Myc/DDK |
| Predicted MW: | 11.7 kDa |
| Concentration: | >0.05 µg/µL as determined by microplate BCA method |
| Purity: | > 80% as determined by SDS-PAGE and Coomassie blue staining |
| Buffer: | 25 mM Tris-HCl, 100 mM glycine, pH 7.3, 10% glycerol |
| Preparation: | Recombinant protein was captured through anti-DDK affinity column followed by conventional chromatography steps. |
| Note: | For testing in cell culture applications, please filter before use. Note that you may experience some loss of protein during the filtration process. |
| Storage: | Store at -80°C. |
| Stability: | Stable for 12 months from the date of receipt of the product under proper storage and handling conditions. Avoid repeated freeze-thaw cycles. |
| RefSeq: | NP_003055 |
| Locus ID: | 6590 |
| UniProt ID: | P03973 |
| RefSeq Size: | 625 |
| Cytogenetics: | 20q13.12 |



[View online »](#)

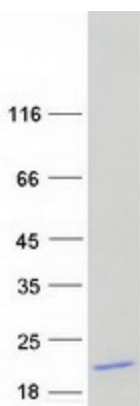
RefSeq ORF: 396

Synonyms: ALK1; ALP; BLPI; HUSI; HUSI-I; MPI; WAP4; WFDC4

Summary: This gene encodes a secreted inhibitor which protects epithelial tissues from serine proteases. It is found in various secretions including seminal plasma, cervical mucus, and bronchial secretions, and has affinity for trypsin, leukocyte elastase, and cathepsin G. Its inhibitory effect contributes to the immune response by protecting epithelial surfaces from attack by endogenous proteolytic enzymes. This antimicrobial protein has antibacterial, antifungal and antiviral activity. [provided by RefSeq, Nov 2014]

Protein Families: Secreted Protein

Product images:



Coomassie blue staining of purified SLPI protein (Cat# [TP304697]). The protein was produced from HEK293T cells transfected with SLPI cDNA clone (Cat# [RC204697]) using MegaTran 2.0 (Cat# [TT210002]).