

Product datasheet for **TP304695M**

CASQ2 (NM_001232) Human Recombinant Protein

Product data:

Product Type:	Recombinant Proteins
Description:	Recombinant protein of human calsequestrin 2 (cardiac muscle) (CASQ2), 100 µg
Species:	Human
Expression Host:	HEK293T
Expression cDNA Clone or AA Sequence:	>RC204695 protein sequence Red =Cloning site Green =Tags(s)

MKRTHLFIVGIYFLSSCRAEEGLNFPTYDGGKDRVSLSEKNFKQVLKKYDLLCLYHEPVSSDKVTQKQF
QLKEIVLELVAQVLEHKAIGFVMVDAKKEAKLAKKLGFDDEEGLYILKGDRTIEFDGEFAADVLFVLLD
LIEDPVEIISSKLEVQAFERIEDYIKLIGFFKSEDSEYYKAFEEAAEHFQPYIKFFATFDKGVAKKLSLK
MNEVDFYEPFMDEPIAIPNKPYTEELVEFVKEHQRPTRLRRLRPEEMFETWEDDLNGIHIVAFAEKSDPD
GYEFLEILKQVARDNTDNPDL SILWIDPDDFP LLVAYWEKTFKIDLFRPQIGVNVTDADSVWMEIPDDD
DLPTAEELEDWIEDVLSGKINTEDDDEDDDDDDNSDEEDNDDSDDDDDDE

TRTRPLEQKLISEEDLAANDILDYKDDDDKV

Tag:	C-Myc/DDK
Predicted MW:	44.2 kDa
Concentration:	>0.05 µg/µL as determined by microplate BCA method
Purity:	> 80% as determined by SDS-PAGE and Coomassie blue staining
Buffer:	25 mM Tris-HCl, 100 mM glycine, pH 7.3, 10% glycerol
Preparation:	Recombinant protein was captured through anti-DDK affinity column followed by conventional chromatography steps.
Note:	For testing in cell culture applications, please filter before use. Note that you may experience some loss of protein during the filtration process.
Storage:	Store at -80°C.
Stability:	Stable for 12 months from the date of receipt of the product under proper storage and handling conditions. Avoid repeated freeze-thaw cycles.
RefSeq:	<u>NP_001223</u>
Locus ID:	845



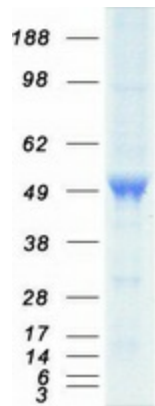
[View online »](#)

UniProt ID: [O14958](#)
RefSeq Size: 2716
Cytogenetics: 1p13.1
RefSeq ORF: 1197
Synonyms: PDIB2

Summary: The protein encoded by this gene specifies the cardiac muscle family member of the calsequestrin family. Calsequestrin is localized to the sarcoplasmic reticulum in cardiac and slow skeletal muscle cells. The protein is a calcium binding protein that stores calcium for muscle function. Mutations in this gene cause stress-induced polymorphic ventricular tachycardia, also referred to as catecholaminergic polymorphic ventricular tachycardia 2 (CPVT2), a disease characterized by bidirectional ventricular tachycardia that may lead to cardiac arrest. [provided by RefSeq, Jul 2008]

Protein Families: Druggable Genome

Product images:



Coomassie blue staining of purified CASQ2 protein (Cat# [TP304695]). The protein was produced from HEK293T cells transfected with CASQ2 cDNA clone (Cat# [RC204695]) using MegaTran 2.0 (Cat# [TT210002]).