

Product datasheet for **TP304689L**

CFHL2 (CFHR2) (NM_005666) Human Recombinant Protein

Product data:

Product Type:	Recombinant Proteins
Description:	Purified recombinant protein of Homo sapiens complement factor H-related 2 (CFHR2), 1 mg
Species:	Human
Expression Host:	HEK293T
Expression cDNA Clone or AA Sequence:	>RC204689 protein sequence Red =Cloning site Green =Tags(s)

MWLLVSVILISRISSVGGGEAMFCDFPKINHGILYDEEKYKPFQVPTGEVFYYSCEYNFVSPSKSFWTRI
TCAEEGWSPTPKCLRLCFFPFVENHSESSGQTHLEGDTVQIICNTGYRLQNNENNISCVERGWSTPPKC
RSTISAIEKCGPPPIDNGDITSFLLSVYAPGSSVEYQCQNLYQLEGNNQITCRNGQWSEPPKCLDPCVIS
QEIMEKYNIKLKWNTNQKLYSRTGDIVEFVCKSGYHPTKSHSFRAMCQNGKLVYPSCEEK

TRTRPLEQKLISEEDLAANDILDYKDDDDKV

Tag:	C-Myc/DDK
Predicted MW:	30.5 kDa
Concentration:	>0.05 µg/µL as determined by microplate BCA method
Purity:	> 80% as determined by SDS-PAGE and Coomassie blue staining
Buffer:	25 mM Tris-HCl, 100 mM glycine, pH 7.3, 10% glycerol
Preparation:	Recombinant protein was captured through anti-DDK affinity column followed by conventional chromatography steps.
Note:	For testing in cell culture applications, please filter before use. Note that you may experience some loss of protein during the filtration process.
Storage:	Store at -80°C.
Stability:	Stable for 12 months from the date of receipt of the product under proper storage and handling conditions. Avoid repeated freeze-thaw cycles.
RefSeq:	NP_005657
Locus ID:	3080
UniProt ID:	P36980



[View online »](#)

RefSeq Size: 1043

Cytogenetics: 1q31.3

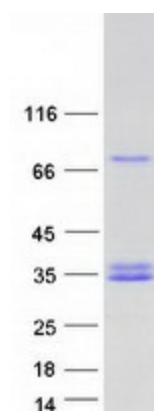
RefSeq ORF: 810

Synonyms: CFHL2; FHR2; HFL3

Summary: This gene belongs to a family of complement factor H-related genes (CFHR), which are clustered together with complement factor H gene on chromosome 1, and are involved in regulation of complement. Mutations in CFHR genes have been associated with dense deposit disease and atypical haemolytic-uraemic syndrome. Alternatively spliced transcript variants have been found for this gene. [provided by RefSeq, Aug 2015]

Protein Families: Secreted Protein

Product images:



Coomassie blue staining of purified CFHR2 protein (Cat# [TP304689]). The protein was produced from HEK293T cells transfected with CFHR2 cDNA clone (Cat# [RC204689]) using MegaTran 2.0 (Cat# [TT210002]).