

Product datasheet for **TP304687M**

LHFPL6 (NM_005780) Human Recombinant Protein

Product data:

Product Type: Recombinant Proteins

Description: Recombinant protein of human lipoma HMGIC fusion partner (LHFP), 100 µg

Species: Human

Expression Host: HEK293T

**Expression cDNA Clone
or AA Sequence:** >RC204687 protein sequence
Red=Cloning site **Green**=Tags(s)

MASSLTCTGVIWALLSFLCAATSCVGGFFMPYWLWGSQLGKPVSFGTFRRCSTYPVHDESRQMMVMVEECGR
YASFQGPSAEWRCTIVTGLGCGLLLLLVALTALMGCCVSDLISRTVGRVAGGIQFLGGLLIGAGCALYP
LGWDSEEVQRQTCGYTSGQFDLGKCEIGWAYYCTGAGATAAMLLCTWLACFSGKKQKHYPY

TRTRPLEQKLISEEDLAANDILDYKDDDDKV

Tag: C-Myc/DDK

Predicted MW: 21.4 kDa

Concentration: >0.05 µg/µL as determined by microplate BCA method

Purity: > 80% as determined by SDS-PAGE and Coomassie blue staining

Buffer: 25 mM Tris-HCl, 100 mM glycine, pH 7.3, 10% glycerol

Preparation: Recombinant protein was captured through anti-DDK affinity column followed by conventional chromatography steps.

Note: For testing in cell culture applications, please filter before use. Note that you may experience some loss of protein during the filtration process.

Storage: Store at -80°C.

Stability: Stable for 12 months from the date of receipt of the product under proper storage and handling conditions. Avoid repeated freeze-thaw cycles.

RefSeq: [NP_005771](#)

Locus ID: 10186

UniProt ID: [Q9Y693](#), [A0A024RDR1](#)

RefSeq Size: 2180



[View online »](#)

Cytogenetics: 13q13.3-q14.11

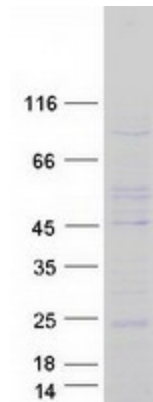
RefSeq ORF: 600

Synonyms: LHFP

Summary: This gene is a member of the lipoma HMGIC fusion partner (LHFP) gene family, which is a subset of the superfamily of tetraspan transmembrane protein encoding genes. This gene is fused to a high-mobility group gene in a translocation-associated lipoma. Mutations in another LHFP-like gene result in deafness in humans and mice. Alternatively spliced transcript variants have been found; however, their full-length nature is not known. [provided by RefSeq, Jul 2008]

Protein Families: Transmembrane

Product images:



Coomassie blue staining of purified LHFPL6 protein (Cat# [TP304687]). The protein was produced from HEK293T cells transfected with LHFPL6 cDNA clone (Cat# [RC204687]) using MegaTran 2.0 (Cat# [TT210002]).