

## Product datasheet for **TP304687L**

### LHFPL6 (NM\_005780) Human Recombinant Protein

#### Product data:

**Product Type:** Recombinant Proteins

**Description:** Recombinant protein of human lipoma HMGIC fusion partner (LHFP), 1 mg

**Species:** Human

**Expression Host:** HEK293T

**Expression cDNA Clone  
or AA Sequence:** >RC204687 protein sequence  
**Red**=Cloning site **Green**=Tags(s)

MASSLTCTGVIWALLSFLCAATSCVGGFFMPYWLWGSQLGKPVSGTFRRCSTYPVHDESRQMMVMVEECGR  
YASFQGPSAEWRCTIVTGLGCGLLLLLVALTALMGCCVSDLISRTVGRVAGGIQFLGGLLIGAGCALYP  
LGWDSEEVQRQTCGYTSGQFDLGKCEIGWAYYCTGAGATAAMLLCTWLACFSGKKQKHYPY

**TRTRPLEQKLISEEDLAANDILDYKDDDDKV**

**Tag:** C-Myc/DDK

**Predicted MW:** 21.4 kDa

**Concentration:** >0.05 µg/µL as determined by microplate BCA method

**Purity:** > 80% as determined by SDS-PAGE and Coomassie blue staining

**Buffer:** 25 mM Tris-HCl, 100 mM glycine, pH 7.3, 10% glycerol

**Preparation:** Recombinant protein was captured through anti-DDK affinity column followed by conventional chromatography steps.

**Note:** For testing in cell culture applications, please filter before use. Note that you may experience some loss of protein during the filtration process.

**Storage:** Store at -80°C.

**Stability:** Stable for 12 months from the date of receipt of the product under proper storage and handling conditions. Avoid repeated freeze-thaw cycles.

**RefSeq:** [NP\\_005771](#)

**Locus ID:** 10186

**UniProt ID:** [Q9Y693](#), [A0A024RDR1](#)

**RefSeq Size:** 2180



[View online »](#)

Cytogenetics: 13q13.3-q14.11

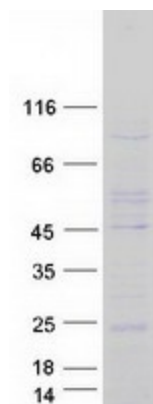
RefSeq ORF: 600

Synonyms: LHFP

**Summary:** This gene is a member of the lipoma HMGIC fusion partner (LHFP) gene family, which is a subset of the superfamily of tetraspan transmembrane protein encoding genes. This gene is fused to a high-mobility group gene in a translocation-associated lipoma. Mutations in another LHFP-like gene result in deafness in humans and mice. Alternatively spliced transcript variants have been found; however, their full-length nature is not known. [provided by RefSeq, Jul 2008]

**Protein Families:** Transmembrane

### Product images:



Coomassie blue staining of purified LHFPL6 protein (Cat# [TP304687]). The protein was produced from HEK293T cells transfected with LHFPL6 cDNA clone (Cat# [RC204687]) using MegaTran 2.0 (Cat# [TT210002]).