

Product datasheet for **TP304687**

LHFPL6 (NM_005780) Human Recombinant Protein

Product data:

Product Type:	Recombinant Proteins
Description:	Recombinant protein of human lipoma HMGIC fusion partner (LHFP), 20 µg
Species:	Human
Expression Host:	HEK293T
Expression cDNA Clone or AA Sequence:	>RC204687 protein sequence Red =Cloning site Green =Tags(s)
	 MASSLTCTGVIWALLSFLCAATSCVGGFFMPYWLWGSQLGKPVSFGTFRRCSTYPVHDESRQMMVMVEECGR YASFQGPSAEWRCTIVTGLGCGLLLLLVALTALMGCCVSDLISRTVGRVAGGIQFLGGLLIGAGCALYP LGWDSEEVQRQTCGYTSGQFDLGKCEIGWAYYCTGAGATAAMLLCTWLACFSGKKQKHYPY TRTRPLEQKLISEEDLAANDILDYKDDDDKV
Tag:	C-Myc/DDK
Predicted MW:	21.4 kDa
Concentration:	>0.05 µg/µL as determined by microplate BCA method
Purity:	> 80% as determined by SDS-PAGE and Coomassie blue staining
Buffer:	25 mM Tris-HCl, 100 mM glycine, pH 7.3, 10% glycerol
Preparation:	Recombinant protein was captured through anti-DDK affinity column followed by conventional chromatography steps.
Note:	For testing in cell culture applications, please filter before use. Note that you may experience some loss of protein during the filtration process.
Storage:	Store at -80°C.
Stability:	Stable for 12 months from the date of receipt of the product under proper storage and handling conditions. Avoid repeated freeze-thaw cycles.
RefSeq:	NP_005771
Locus ID:	10186
UniProt ID:	Q9Y693 , A0A024RDR1
RefSeq Size:	2180



[View online »](#)

Cytogenetics: 13q13.3-q14.11

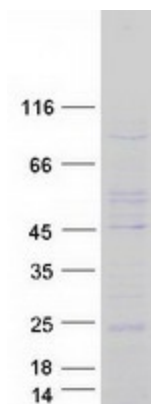
RefSeq ORF: 600

Synonyms: LHFP

Summary: This gene is a member of the lipoma HMGIC fusion partner (LHFP) gene family, which is a subset of the superfamily of tetraspan transmembrane protein encoding genes. This gene is fused to a high-mobility group gene in a translocation-associated lipoma. Mutations in another LHFP-like gene result in deafness in humans and mice. Alternatively spliced transcript variants have been found; however, their full-length nature is not known. [provided by RefSeq, Jul 2008]

Protein Families: Transmembrane

Product images:



Coomassie blue staining of purified LHFPL6 protein (Cat# TP304687). The protein was produced from HEK293T cells transfected with LHFPL6 cDNA clone (Cat# [RC204687]) using MegaTran 2.0 (Cat# [TT210002]).