

Product datasheet for **TP304686**

MD2 (LY96) (NM_015364) Human Recombinant Protein

Product data:

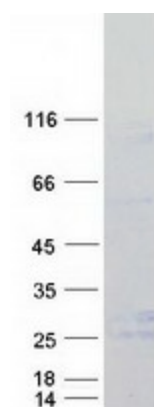
Product Type:	Recombinant Proteins
Description:	Recombinant protein of human lymphocyte antigen 96 (LY96), 20 µg
Species:	Human
Expression Host:	HEK293T
Expression cDNA Clone or AA Sequence:	>RC204686 protein sequence Red =Cloning site Green =Tags(s)
	MLPFLFFSTLFSSIFTEAQKQYWVCNSSDASISYTYCDKMQYPISINVNPCIELKGSKGLLHIFYIPRRD LKQLYFNLYITVNTMNLPKRKEVICRGSDDDYSFCRALKGETVNTTISFSFKGIKFSKGKYKCWEAISG SPEEMLCLEFVILHQPNSN
	TRTRPLEQKLISEEDLAANDILDYKDDDDKV
Tag:	C-Myc/DDK
Predicted MW:	18.4 kDa
Concentration:	>0.05 µg/µL as determined by microplate BCA method
Purity:	> 80% as determined by SDS-PAGE and Coomassie blue staining
Buffer:	25 mM Tris-HCl, 100 mM glycine, pH 7.3, 10% glycerol
Bioactivity:	Ex vivo tissue treatment (PMID: 25605324)
Preparation:	Recombinant protein was captured through anti-DDK affinity column followed by conventional chromatography steps.
Note:	For testing in cell culture applications, please filter before use. Note that you may experience some loss of protein during the filtration process.
Storage:	Store at -80°C.
Stability:	Stable for 12 months from the date of receipt of the product under proper storage and handling conditions. Avoid repeated freeze-thaw cycles.
RefSeq:	NP_056179
Locus ID:	23643
UniProt ID:	Q9Y6Y9



[View online »](#)

RefSeq Size:	642
Cytogenetics:	8q21.11
RefSeq ORF:	480
Synonyms:	ESOP-1; ly-96; MD-2; MD2
Summary:	This gene encodes a protein which associates with toll-like receptor 4 on the cell surface and confers responsiveness to lipopolysaccharide (LPS), thus providing a link between the receptor and LPS signaling. Studies of the mouse ortholog suggest that this gene may be involved in endotoxin neutralization. Alternative splicing results in multiple transcript variants encoding different isoforms. [provided by RefSeq, Sep 2010]
Protein Families:	Secreted Protein
Protein Pathways:	Pathogenic Escherichia coli infection, Toll-like receptor signaling pathway

Product images:



Coomassie blue staining of purified LY96 protein (Cat# TP304686). The protein was produced from HEK293T cells transfected with LY96 cDNA clone (Cat# [RC204686]) using MegaTran 2.0 (Cat# [TT210002]).