

## Product datasheet for **TP304684L**

### PGCP (CPQ) (NM\_016134) Human Recombinant Protein

#### Product data:

**Product Type:** Recombinant Proteins

**Description:** Recombinant protein of human plasma glutamate carboxypeptidase (PGCP), 1 mg

**Species:** Human

**Expression Host:** HEK293T

**Expression cDNA Clone  
or AA Sequence:** >RC204684 protein sequence  
**Red**=Cloning site **Green**=Tags(s)

MKFLIAFFGGVHLLSLCSGKAICKNGISKRTFEEIKEEIASCGDVAKAIINLAVYGKAQNRSYERLALL  
VDTVGPRLSGSKNLEKAIQIMYQNLQQDGLKVVHLEPVRIPHWERGEESAVMLEPRIHKIAILGLGSSIG  
TPPEGITAEVLVTSFDELQRRASEARGKIVVYNQPYINYSRTVQYRTQGAVEAAKVGALASLIRSVASF  
SIYSPHTGIQEYQDGVPKIPTACITVEDAEMMSRMASHGKIKIVIQLKMGAKTYPDTSFNTVAEITGSKY  
PEQVVLVSGHLDSWDVGGAMDDGGGAFISWEALSLIKDLGLRPKRTLRLVLWTAEEQGGVGAFFQYYQLH  
KVNISNYSLVMESDAGTFLPTGLQFTGSEKARAIMEEVMSLLQPLNITQVLSHGEGTDINFWIQAGVPGA  
SLLDDLYKYFFFHSHGDTMTVMDPKQMNVA AVWAVVSYVADMEEMLPRS

**TRTRPLEQKLISEEDLAANDILDYKDDDDKV**

**Tag:** C-Myc/DDK

**Predicted MW:** 51.7 kDa

**Concentration:** >0.05 µg/µL as determined by microplate BCA method

**Purity:** > 80% as determined by SDS-PAGE and Coomassie blue staining

**Buffer:** 25 mM Tris-HCl, 100 mM glycine, pH 7.3, 10% glycerol

**Preparation:** Recombinant protein was captured through anti-DDK affinity column followed by conventional chromatography steps.

**Note:** For testing in cell culture applications, please filter before use. Note that you may experience some loss of protein during the filtration process.

**Storage:** Store at -80°C.

**Stability:** Stable for 12 months from the date of receipt of the product under proper storage and handling conditions. Avoid repeated freeze-thaw cycles.

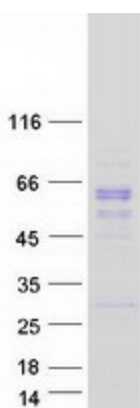
**RefSeq:** [NP\\_057218](#)



[View online »](#)

Locus ID:	10404
UniProt ID:	<a href="#">Q9Y646</a> , <a href="#">A0A024R9B8</a>
RefSeq Size:	1949
Cytogenetics:	8q22.1
RefSeq ORF:	1416
Synonyms:	LDP; PGCP
Summary:	This gene encodes a metallopeptidase that belongs to the peptidase M28 family. The encoded protein may catalyze the cleavage of dipeptides with unsubstituted terminals into amino acids. [provided by RefSeq, Jul 2013]
Protein Families:	Protease

### Product images:



Coomassie blue staining of purified CPQ protein (Cat# [TP304684]). The protein was produced from HEK293T cells transfected with CPQ cDNA clone (Cat# [RC204684]) using MegaTran 2.0 (Cat# [TT210002]).