

## Product datasheet for **TP304684**

### PGCP (CPQ) (NM\_016134) Human Recombinant Protein

#### Product data:

Product Type:	Recombinant Proteins
Description:	Recombinant protein of human plasma glutamate carboxypeptidase (PGCP), 20 µg
Species:	Human
Expression Host:	HEK293T
Expression cDNA Clone or AA Sequence:	>RC204684 protein sequence <b>Red</b> =Cloning site <b>Green</b> =Tags(s)

MKFLIAFFGGVHLLSLCSGKAICKNGISKRTFEEIKEEIASCGDVAKAIINLAVYGKAQNRSYERLALL  
VDTVGPRLSGSKNLEKAIQIMYQNLQQDGLKVVHLEPVRIHPWERGEESAVMLEPRIHKIAILGLGSSIG  
TPPEGITAEVLVWTSFDELQRRASEARGKIVVYNQPYINYSRTVQYRTQGAVEAAKVGALASLIRSVASF  
SIYSPHTGIQEYQDGVPKIPTACITVEDAEMMSRMASHGKIKIVIQLKMGAKTYPDTSFNTVAEITGSKY  
PEQVVLVSGHLDSWDVGGAMDDGGGAFISWEALSLIKDLGLRPKRTLRLVLWTAEEQGGVGAFFQYYQLH  
KVNISNYSLVMESDAGTFLPTGLQFTGSEKARAIMEEVMSLLQPLNITQVLSHGEGTDINFWIQAGVPGA  
SLLDDLYKYFFFHSHGDTMTVMDPKQMNVA AVWAVVSYVADMEEMLPRS

**TRTRPLEQKLISEEDLAANDILDYKDDDDKV**

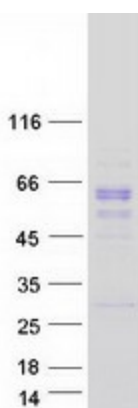
Tag:	C-Myc/DDK
Predicted MW:	51.7 kDa
Concentration:	>0.05 µg/µL as determined by microplate BCA method
Purity:	> 80% as determined by SDS-PAGE and Coomassie blue staining
Buffer:	25 mM Tris-HCl, 100 mM glycine, pH 7.3, 10% glycerol
Preparation:	Recombinant protein was captured through anti-DDK affinity column followed by conventional chromatography steps.
Note:	For testing in cell culture applications, please filter before use. Note that you may experience some loss of protein during the filtration process.
Storage:	Store at -80°C.
Stability:	Stable for 12 months from the date of receipt of the product under proper storage and handling conditions. Avoid repeated freeze-thaw cycles.
RefSeq:	<a href="#">NP_057218</a>



[View online »](#)

Locus ID:	10404
UniProt ID:	<a href="#">Q9Y646</a> , <a href="#">A0A024R9B8</a>
RefSeq Size:	1949
Cytogenetics:	8q22.1
RefSeq ORF:	1416
Synonyms:	LDP; PGCP
Summary:	This gene encodes a metallopeptidase that belongs to the peptidase M28 family. The encoded protein may catalyze the cleavage of dipeptides with unsubstituted terminals into amino acids. [provided by RefSeq, Jul 2013]
Protein Families:	Protease

### Product images:



Coomassie blue staining of purified CPQ protein (Cat# TP304684). The protein was produced from HEK293T cells transfected with CPQ cDNA clone (Cat# [RC204684]) using MegaTran 2.0 (Cat# [TT210002]).