

Product datasheet for **TP304674L**

Galectin 1 (LGALS1) (NM_002305) Human Recombinant Protein

Product data:

Product Type: Recombinant Proteins

Description: Recombinant protein of human lectin, galactoside-binding, soluble, 1 (LGALS1), 1 mg

Species: Human

Expression Host: HEK293T

Expression cDNA Clone >RC204674 protein sequence

or AA Sequence: **Red**=Cloning site **Green**=Tags(s)

MACGLVASNLNLKPGECLRVRGEVAPDAKSFVLNLGKDSNNLCLHFNPRFNAHGDANTIVCNSKDGGAWG
TEQREAVFPFQPGSVAEVCITFDQANLTVKLPDGYEFKFPNRLNLEAINYMAADGDFKIKCVAFD

TRTRPLEQKLISEEDLAANDILDYKDDDDKV

Tag: C-Myc/DDK

Predicted MW: 14.5 kDa

Concentration: >0.05 µg/µL as determined by microplate BCA method

Purity: > 80% as determined by SDS-PAGE and Coomassie blue staining

Buffer: 25 mM Tris-HCl, 100 mM glycine, pH 7.3, 10% glycerol

Preparation: Recombinant protein was captured through anti-DDK affinity column followed by conventional chromatography steps.

Note: For testing in cell culture applications, please filter before use. Note that you may experience some loss of protein during the filtration process.

Storage: Store at -80°C.

Stability: Stable for 12 months from the date of receipt of the product under proper storage and handling conditions. Avoid repeated freeze-thaw cycles.

RefSeq: [NP_002296](#)

Locus ID: 3956

UniProt ID: [P09382](#), [A0A384MR27](#)

RefSeq Size: 586

Cytogenetics: 22q13.1



[View online »](#)

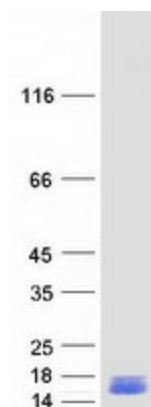
RefSeq ORF: 405

Synonyms: GAL1; GBP

Summary: The galectins are a family of beta-galactoside-binding proteins implicated in modulating cell-cell and cell-matrix interactions. This gene product may act as an autocrine negative growth factor that regulates cell proliferation. [provided by RefSeq, Jul 2008]

Protein Families: Druggable Genome

Product images:



Coomassie blue staining of purified LGALS1 protein (Cat# [TP304674]). The protein was produced from HEK293T cells transfected with LGALS1 cDNA clone (Cat# [RC204674]) using MegaTran 2.0 (Cat# [TT210002]).