

Product datasheet for **TP304673**

Tropomodulin 4 (TMOD4) (NM_013353) Human Recombinant Protein

Product data:

Product Type:	Recombinant Proteins
Description:	Recombinant protein of human tropomodulin 4 (muscle) (TMOD4), 20 µg
Species:	Human
Expression Host:	HEK293T
Expression cDNA Clone or AA Sequence:	>RC204673 protein sequence Red =Cloning site Green =Tags(s)

MSSYQKELEKYRDIIDEILRTLSPEELEQLDCELQEMDPENMLLPAGLRQRDQTKKSPTGPLDREALLQ
YLEQQALEVKERDDLVPFTGEKKGKPYIQPKREIPAEEQITLEPELEEALAHATDAEMCDIAAILDMYTL
MSNKQYYDALCSGEICNTEGISSVVQPDKYKVPDEPPNPTNIEEILKRVRSDNKELEEVNLNNIQDIPI
PMLSELCEAMKANTYVRSFSLVATRSGDPIANAVADMLRENRLQSLNIESNFISSTGLMAVLKAVRENA
TLTEL RVDNQRQWP GDAVEMEMATVLEQRPSIVRFGYHFTQQGPRARAAQAMTRNNELRRQKQR

TRTRPLEQKLISEEDLAANDILDYKDDDDKV

Tag:	C-Myc/DDK
Predicted MW:	39.2 kDa
Concentration:	>0.05 µg/µL as determined by microplate BCA method
Purity:	> 80% as determined by SDS-PAGE and Coomassie blue staining
Buffer:	25 mM Tris-HCl, 100 mM glycine, pH 7.3, 10% glycerol
Preparation:	Recombinant protein was captured through anti-DDK affinity column followed by conventional chromatography steps.
Note:	For testing in cell culture applications, please filter before use. Note that you may experience some loss of protein during the filtration process.
Storage:	Store at -80°C.
Stability:	Stable for 12 months from the date of receipt of the product under proper storage and handling conditions. Avoid repeated freeze-thaw cycles.
RefSeq:	NP_037485
Locus ID:	29765



[View online »](#)

UniProt ID: [Q9NZQ9](#)

RefSeq Size: 1322

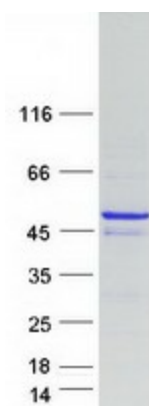
Cytogenetics: 1q21.3

RefSeq ORF: 1035

Synonyms: SK-TMOD

Summary: Blocks the elongation and depolymerization of the actin filaments at the pointed end. The Tmod/TM complex contributes to the formation of the short actin protofilament, which in turn defines the geometry of the membrane skeleton.[UniProtKB/Swiss-Prot Function]

Product images:



Coomassie blue staining of purified TMOD4 protein (Cat# TP304673). The protein was produced from HEK293T cells transfected with TMOD4 cDNA clone (Cat# [RC204673]) using MegaTran 2.0 (Cat# [TT210002]).