

Product datasheet for **TP304669M**

Langerin (CD207) (NM_015717) Human Recombinant Protein

Product data:

Product Type:	Recombinant Proteins
Description:	Recombinant protein of human CD207 molecule, langerin (CD207), 100 µg
Species:	Human
Expression Host:	HEK293T
Expression cDNA Clone or AA Sequence:	>RC204669 protein sequence Red =Cloning site Green =Tags(s)
	 MTVEKEAPDAHFTVDKQNISLWPREPPPKSGPSLVPGKTPVRAALICLTLVLVASVLLQAVLYPRFMGT ISDVKTNVQLLKGRVDNISTLDSEIKKNSDGMEEAGVQIQMVNESLGYVRSQFLKLTSTVEKANAQIQIL TRSWEEVSTLNAQIPELKSLEKASALNTKIRALQGSLENMSKLLKRQNDILQVVSQGWKYFKGNFYFSS LIPKTWYSAEQFCVSRNSHLTSTSESESEQEFLYKTAGGLIYWIGLTKAGMEGDWSWVDDTPFNKVQSARF WIPGEPNAGNNEHCGNIKAPSLQAWNDAPCDKTLFLICKRPVVPSEP TRTRPLEQKLISEEDLAANDILDYKDDDDKV
Tag:	C-Myc/DDK
Predicted MW:	36.5 kDa
Concentration:	>0.05 µg/µL as determined by microplate BCA method
Purity:	> 80% as determined by SDS-PAGE and Coomassie blue staining
Buffer:	25 mM Tris-HCl, 100 mM glycine, pH 7.3, 10% glycerol
Preparation:	Recombinant protein was captured through anti-DDK affinity column followed by conventional chromatography steps.
Note:	For testing in cell culture applications, please filter before use. Note that you may experience some loss of protein during the filtration process.
Storage:	Store at -80°C.
Stability:	Stable for 12 months from the date of receipt of the product under proper storage and handling conditions. Avoid repeated freeze-thaw cycles.
RefSeq:	NP_056532
Locus ID:	50489



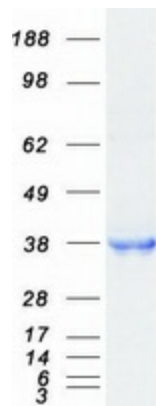
[View online »](#)

UniProt ID: [Q9UJ71](#)
RefSeq Size: 1886
Cytogenetics: 2p13.3
RefSeq ORF: 984
Synonyms: CLEC4K

Summary: The protein encoded by this gene is expressed only in Langerhans cells which are immature dendritic cells of the epidermis and mucosa. It is localized in the Birbeck granules, organelles present in the cytoplasm of Langerhans cells and consisting of superimposed and zippered membranes. It is a C-type lectin with mannose binding specificity, and it has been proposed that mannose binding by this protein leads to internalization of antigen into Birbeck granules and providing access to a nonclassical antigen-processing pathway. Mutations in this gene result in Birbeck granules deficiency or loss of sugar binding activity. [provided by RefSeq, Aug 2010]

Protein Families: Druggable Genome, Transmembrane

Product images:



Coomassie blue staining of purified CD207 protein (Cat# [TP304669]). The protein was produced from HEK293T cells transfected with CD207 cDNA clone (Cat# [RC204669]) using MegaTran 2.0 (Cat# [TT210002]).