

Product datasheet for **TP304653**

GIMAP4 (NM_018326) Human Recombinant Protein

Product data:

| | |
|---------------------------------------|--|
| Product Type: | Recombinant Proteins |
| Description: | Recombinant protein of human GTPase, IMAP family member 4 (GIMAP4), 20 µg |
| Species: | Human |
| Expression Host: | HEK293T |
| Expression cDNA Clone or AA Sequence: | >RC204653 protein sequence Red =Cloning site Green =Tags(s) |

MAAQYGSMSFNPSTPGASYGPRQEPNRNSQLRIVLVGKTGAGKSATGNSILGRKVFHSGTAAKSITKKCE
KRSSSWKETELVVDTPGIFDTEVPNAETSKEIIRCILLTSPGPHALLLVPLGRYTEEEHKATEKILKM
FGERARSMILIFTRKDDLGDNLHDYLRAPEDIQDLMDIFGDRYCALNNKATGAEQEAQRAQLGLLIQ
RVVRENKEGCYTNRMYPQRAEEIQKQTQAMQELHRVELEREKARIREEYEEKIRKLEDKVEQEKRRKQME
KKLAEQEAHYAVRQQRARTEVESKDGILELIMTALQIASFILLRLFAED

TRTRPLEQKLISEEDLAANDILDYKDDDDKV

| | |
|----------------|--|
| Tag: | C-Myc/DDK |
| Predicted MW: | 37.4 kDa |
| Concentration: | >0.05 µg/µL as determined by microplate BCA method |
| Purity: | > 80% as determined by SDS-PAGE and Coomassie blue staining |
| Buffer: | 25 mM Tris-HCl, 100 mM glycine, pH 7.3, 10% glycerol |
| Preparation: | Recombinant protein was captured through anti-DDK affinity column followed by conventional chromatography steps. |
| Note: | For testing in cell culture applications, please filter before use. Note that you may experience some loss of protein during the filtration process. |
| Storage: | Store at -80°C. |
| Stability: | Stable for 12 months from the date of receipt of the product under proper storage and handling conditions. Avoid repeated freeze-thaw cycles. |
| RefSeq: | NP_060796 |
| Locus ID: | 55303 |



[View online »](#)

UniProt ID: [Q9NUV9](#), [A0A090N7X0](#)

RefSeq Size: 1983

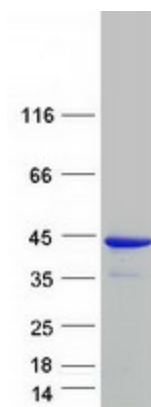
Cytogenetics: 7q36.1

RefSeq ORF: 987

Synonyms: IAN-1; IAN1; IMAP4; MSTP062

Summary: This gene encodes a protein belonging to the GTP-binding superfamily and to the immuno-associated nucleotide (IAN) subfamily of nucleotide-binding proteins. The encoded protein of this gene may be negatively regulated by T-cell acute lymphocytic leukemia 1 (TAL1). In humans, the IAN subfamily genes are located in a cluster at 7q36.1. [provided by RefSeq, Jul 2008]

Product images:



Coomassie blue staining of purified GIMAP4 protein (Cat# TP304653). The protein was produced from HEK293T cells transfected with GIMAP4 cDNA clone (Cat# [RC204653]) using MegaTran 2.0 (Cat# [TT210002]).