

Product datasheet for **TP304644L**

RRP15 (NM_016052) Human Recombinant Protein

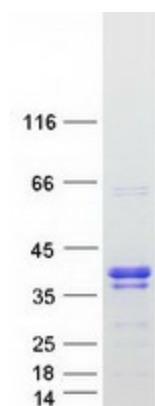
Product data:

| | |
|---------------------------------------|---|
| Product Type: | Recombinant Proteins |
| Description: | Recombinant protein of human ribosomal RNA processing 15 homolog (S. cerevisiae) (RRP15), 1 mg |
| Species: | Human |
| Expression Host: | HEK293T |
| Expression cDNA Clone or AA Sequence: | >RC204644 protein sequence Red =Cloning site Green =Tags(s) MKMVTGAVASVLEDEATDTSDEGSCGSEKDHFYSDDDAIEADSEGDAEPCDKENENDGESSVGTNMGW A DAMAKVLNKKTPESKPTILVKNKKLEKEKEKLKQERLEKIKQRDKRLEWEMMCRVKPDVWQDKETERNLQ RIATRGVVQLFNAVQKHQKNVDEKVKEAGSSMRKRAKLISTVSKKDFISVLRGMDGSTNETASSRKKPKA KQTEVKSEEGPGWTILRDDFMGASMKDWDKESDGPDDSRPESASDSDT TR TRPLEQKLISEEDLAANDILDYKDDDDKV |
| Tag: | C-Myc/DDK |
| Predicted MW: | 31.3 kDa |
| Concentration: | >0.05 µg/µL as determined by microplate BCA method |
| Purity: | > 80% as determined by SDS-PAGE and Coomassie blue staining |
| Buffer: | 25 mM Tris-HCl, 100 mM glycine, pH 7.3, 10% glycerol |
| Preparation: | Recombinant protein was captured through anti-DDK affinity column followed by conventional chromatography steps. |
| Note: | For testing in cell culture applications, please filter before use. Note that you may experience some loss of protein during the filtration process. |
| Storage: | Store at -80°C. |
| Stability: | Stable for 12 months from the date of receipt of the product under proper storage and handling conditions. Avoid repeated freeze-thaw cycles. |
| RefSeq: | <u>NP_057136</u> |
| Locus ID: | 51018 |


[View online »](#)

| | |
|---------------|---|
| UniProt ID: | <u>Q9Y3B9</u> |
| RefSeq Size: | 7782 |
| Cytogenetics: | 1q41 |
| RefSeq ORF: | 777 |
| Synonyms: | CGI-115; KIAA0507 |
| Summary: | This gene encodes a protein that co-purifies with human nucleoli. A similar protein in budding yeast is a component of pre-60S ribosomal particles, and is required for the early maturation steps of the 60S subunit. [provided by RefSeq, Jul 2008] |

Product images:



Coomassie blue staining of purified RRP15 protein (Cat# [TP304644]). The protein was produced from HEK293T cells transfected with RRP15 cDNA clone (Cat# [RC204644]) using MegaTran 2.0 (Cat# [TT210002]).