

Product datasheet for TP304629

Alpha 1 Acid Glycoprotein (ORM1) (NM_000607) Human Recombinant Protein

Product data:

Product Type: Recombinant Proteins

Description: Recombinant protein of human orosomuroid 1 (ORM1), 20 µg

Species: Human

Expression Host: HEK293T

**Expression cDNA Clone
or AA Sequence:** >RC204629 protein sequence
Red=Cloning site **Green**=Tags(s)

MALSWVLTVLSLLPLLEAQIPLCANLVPVPITNATLDRITGKWFYIASAFRNEEYNKSVQEIQATFFYFT
PNKTEDTIFLREYQTRQDQCIYNTTYLNVQRENGTISRIVGGQEHFAHLLILRDTKTYMLAFDVENDEKNW
GLSVYADKPETTKEQLGEFYEALDCLRIPKSDVWYTDWKKDKCEPLEKQHEKERKQEEGES

TRTRPLEQKLISEEDLAANDILDYKDDDDKV

Tag: C-Myc/DDK

Predicted MW: 21.5 kDa

Concentration: >0.05 µg/µL as determined by microplate BCA method

Purity: > 80% as determined by SDS-PAGE and Coomassie blue staining

Buffer: 25 mM Tris-HCl, 100 mM glycine, pH 7.3, 10% glycerol

Preparation: Recombinant protein was captured through anti-DDK affinity column followed by conventional chromatography steps.

Note: For testing in cell culture applications, please filter before use. Note that you may experience some loss of protein during the filtration process.

Storage: Store at -80°C.

Stability: Stable for 12 months from the date of receipt of the product under proper storage and handling conditions. Avoid repeated freeze-thaw cycles.

RefSeq: [NP_000598](#)

Locus ID: 5004

UniProt ID: [P02763](#)

RefSeq Size: 847



[View online »](#)

Cytogenetics: 9q32

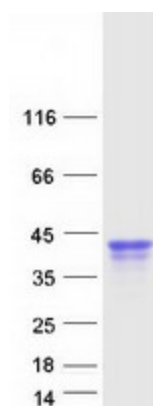
RefSeq ORF: 603

Synonyms: AGP-A; AGP1; HEL-S-153w; ORM

Summary: This gene encodes a key acute phase plasma protein. Because of its increase due to acute inflammation, this protein is classified as an acute-phase reactant. The specific function of this protein has not yet been determined; however, it may be involved in aspects of immunosuppression. [provided by RefSeq, Jul 2008]

Protein Families: Druggable Genome, Secreted Protein

Product images:



Coomassie blue staining of purified ORM1 protein (Cat# TP304629). The protein was produced from HEK293T cells transfected with ORM1 cDNA clone (Cat# [RC204629]) using MegaTran 2.0 (Cat# [TT210002]).