

Product datasheet for **TP304625M**

LGALS14 (NM_020129) Human Recombinant Protein

Product data:

Product Type:	Recombinant Proteins
Description:	Recombinant protein of human lectin, galactoside-binding, soluble, 14 (LGALS14), transcript variant 1, 100 µg
Species:	Human
Expression Host:	HEK293T
Expression cDNA Clone or AA Sequence:	>RC204625 protein sequence Red =Cloning site Green =Tags(s)
	MSSLPVPYTLPVSLPVGSCVIITGTPILTFVKDPQLEVNFYTGMDSDIAFQFRLHFGHPAIMNSRVFG IWRYEKCYLPPFEDGKPFELCIYVRHKEYKVMVNGQRIYNFAHRFPASVKMLQVLRDISLTRVLISD
	TRTRPLEQKLISEEDLAANDILDYKDDDDKV
Tag:	C-Myc/DDK
Predicted MW:	15.9 kDa
Concentration:	>0.05 µg/µL as determined by microplate BCA method
Purity:	> 80% as determined by SDS-PAGE and Coomassie blue staining
Buffer:	25 mM Tris-HCl, 100 mM glycine, pH 7.3, 10% glycerol
Preparation:	Recombinant protein was captured through anti-DDK affinity column followed by conventional chromatography steps.
Note:	For testing in cell culture applications, please filter before use. Note that you may experience some loss of protein during the filtration process.
Storage:	Store at -80°C.
Stability:	Stable for 12 months from the date of receipt of the product under proper storage and handling conditions. Avoid repeated freeze-thaw cycles.
RefSeq:	NP_064514
Locus ID:	56891
UniProt ID:	Q8TCE9
RefSeq Size:	794



[View online »](#)

Cytogenetics: 19q13.2

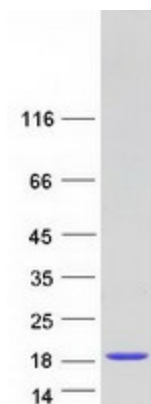
RefSeq ORF: 417

Synonyms: CLC2; PPL13

Summary: This gene is predominantly expressed in placenta. The encoded protein belongs to the galectin (galaptin/S-lectin) family. The members of galectin family contain one or two carbohydrate recognition domains, which can bind beta-galactoside. Two alternatively spliced transcript variants encoding distinct isoforms have been observed. [provided by RefSeq, Jul 2008]

Protein Families: Transmembrane

Product images:



Coomassie blue staining of purified LGALS14 protein (Cat# [TP304625]). The protein was produced from HEK293T cells transfected with LGALS14 cDNA clone (Cat# [RC204625]) using MegaTran 2.0 (Cat# [TT210002]).