

Product datasheet for **TP304600M**

FAM172A (NM_032042) Human Recombinant Protein

Product data:

Product Type: Recombinant Proteins
Description: Recombinant protein of human family with sequence similarity 172, member A (FAM172A), 100 µg
Species: Human
Expression Host: HEK293T
Expression cDNA Clone or AA Sequence: >RC204600 protein sequence
Red=Cloning site **Green**=Tags(s)

MSISLSSLILLPIWINMAQIQGGPDEKEKTTALKDLLSRIDLDELMMKKDEPPLDFPDTLEGFEYAFNEK
GQLRHIKTGEPFVFNREDLHRWNQKRYEALGEIITKYVYELLEKDCNLKKSIPVDATESPKSFIFMS
EDALTNPQKLMVLIHGSGVVRAGQWARRLIINEDLDSGTQIPFIKRAVAEGYGVIVLNPENYIEVEKPK
IHVQSSSDSSDEPAEKREKDKVSKETKRRDFYEKYRNPQREKEMMQLYIRENGSPEEHAIYVWDHFIA
QAAAENVFFVAHSYGGLAFVELMIQREADVKNKVTAVALTDSVHNVWHQEAGKTIREWMRENCCNWVSSS
EPLDTSVESMLPDCPRVSAGTDRHELTSWKSFPSIFKFFTEASEAKTSSLKPAVTRRSRIKHEEL

TRTRPLEQKLISEEDLAANDILDYKDDDDKV

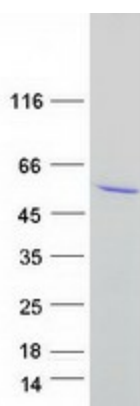
Tag: C-Myc/DDK
Predicted MW: 47.8 kDa
Concentration: >0.05 µg/µL as determined by microplate BCA method
Purity: > 80% as determined by SDS-PAGE and Coomassie blue staining
Buffer: 25 mM Tris-HCl, 100 mM glycine, pH 7.3, 10% glycerol
Preparation: Recombinant protein was captured through anti-DDK affinity column followed by conventional chromatography steps.
Note: For testing in cell culture applications, please filter before use. Note that you may experience some loss of protein during the filtration process.
Storage: Store at -80°C.
Stability: Stable for 12 months from the date of receipt of the product under proper storage and handling conditions. Avoid repeated freeze-thaw cycles.
RefSeq: [NP_114431](#)



[View online »](#)

Locus ID:	83989
UniProt ID:	Q8WUF8 , A0A024RAL9
RefSeq Size:	4720
Cytogenetics:	5q15
RefSeq ORF:	1248
Synonyms:	C5orf21; Toupee
Summary:	Plays a role in the regulation of alternative splicing, by interacting with AGO2 and CHD7. Seems to be required for stabilizing protein-protein interactions at the chromatin-spliceosome interface. May have hydrolase activity.[UniProtKB/Swiss-Prot Function]

Product images:



Coomassie blue staining of purified FAM172A protein (Cat# [TP304600]). The protein was produced from HEK293T cells transfected with FAM172A cDNA clone (Cat# [RC204600]) using MegaTran 2.0 (Cat# [TT210002]).