

## Product datasheet for **TP304576M**

### Vinculin (VCL) (NM\_003373) Human Recombinant Protein

#### Product data:

|                       |   |
|-----------------------|---|
| Product Type:         | Recombinant Proteins  |
| Description:          | Recombinant protein of human vinculin (VCL), transcript variant 2, 100 µg |
| Species:              | Human   |
| Expression Host:      | HEK293T   |
| Expression cDNA       | >RC204576 protein sequence  |
| Clone or AA Sequence: | Red=Cloning site Green=Tags(s)  |

MPVFHTRTIESILEPVAQQISHLVIMHEEGEVDGKAIPDLTAPVAAVQAAVSNLVRVGKETVQTTEDQIL  
KRDMPPAFIKVENACTKLVQAAQMLQSDPYSVPARDYLIDGSRGILSGTSDLLLLTFDEAEVRKIIRVCKG  
ILEYLTVAEVVETMEDLVTYTKNLGPGMTKMAKMIDERQQELTHQEHRVMLVNSMNTVKELLPVLISAMK  
IFVTTKNSKNQGIEEALKNRNFTLEKMSAEINEIIRVLQLTSWDEDAWASKDTEAMKRALASIDSKLNQA  
KGWLRDPSASPGDAGEQAIRQILDEAGKVGELCAGKERREILGTCKMLGQMTDQVADLRARGQGSSPVAM  
QKAQQVVSQGLDVLTAKVENAARKLEAMTNSKQSIAKKIDAAQNWLADPNGGPEGEEQIRGALAEARKIAE  
LCDDPKERDDILRSLGEISALTSKLADLRRQGKGDSPEARALAKQVATALQNLQTKTNRAVANSRPAKAA  
VHLEGKIEQAQRWIDNPTVDDRGVGQAAIRGLVAEGHRLANVMMGPYRQDLLAKCDRVDQLTAQLADLAA  
RGEGESPQARALASQLQDSLKDLKARMQEAMTQEVSDFSDTTTPIKLLAVAATAPPDAPNREEVFDERA  
ANFENHSGKLGATAEKAAAVGTANKSTVEGIQASVKTARELTPQVWSAARILLRNPNGNQAAYEHFETMKN  
QWIDNVEKMTGLVDEAIDTKSLLDASEEAIKKDLCKCKVAMANIQQPQMLVAGATSIARRANRILLVAKRE  
VENSEDPKFAVKAASDELSTISPMVMDAKAVAGNISDPGLQKSFLDSGYRILGAVAKVREAFQPQEP  
DFPPPPDLEQLRLTDELAPPKPLPEGEVPPPPPPPEEKDEEFPEQKAGEVINQPMMAARQLHDEAR  
KWSSKGNIIAAAKRMALLMAEMSRLVRGGSGTKRALIQCAKDIKASDEVTRLAKEVAKQCTDKRIRTN  
LLQVCERIPTISTQLKILSTVKATMLGRNINISDEESEQATEMLVHNAQNLMQSVKETVREAEAAASIKIRT  
DAGFTLRWVRKTPWYQ

TRTRPLEQKLISEEDLAANDILDYKDDDDKV

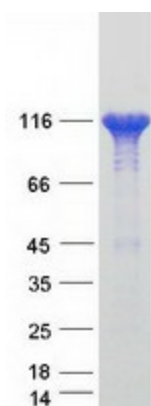
|                |   |
|----------------|---|
| Tag:           | C-Myc/DDK   |
| Predicted MW:  | 116.5 kDa   |
| Concentration: | >0.05 µg/µL as determined by microplate BCA method          |
| Purity:        | > 80% as determined by SDS-PAGE and Coomassie blue staining |
| Buffer:        | 25 mM Tris-HCl, 100 mM glycine, pH 7.3, 10% glycerol        |



[View online »](#)

|                          |   |
|--------------------------|---|
| <b>Bioactivity:</b>      | WB positive control (PMID: <a href="#">26439954</a> )   |
| <b>Preparation:</b>      | Recombinant protein was captured through anti-DDK affinity column followed by conventional chromatography steps.  |
| <b>Note:</b>             | For testing in cell culture applications, please filter before use. Note that you may experience some loss of protein during the filtration process.  |
| <b>Storage:</b>          | Store at -80°C.   |
| <b>Stability:</b>        | Stable for 12 months from the date of receipt of the product under proper storage and handling conditions. Avoid repeated freeze-thaw cycles.   |
| <b>RefSeq:</b>           | <a href="#">NP_003364</a>   |
| <b>Locus ID:</b>         | 7414  |
| <b>UniProt ID:</b>       | <a href="#">P18206</a> , <a href="#">A0A024QZN4</a> , <a href="#">B3KXA2</a>  |
| <b>RefSeq Size:</b>      | 5443  |
| <b>Cytogenetics:</b>     | 10q22.2   |
| <b>RefSeq ORF:</b>       | 3198  |
| <b>Synonyms:</b>         | CMD1W; CMH15; HEL114; MV; MVCL  |
| <b>Summary:</b>          | Vinculin is a cytoskeletal protein associated with cell-cell and cell-matrix junctions, where it is thought to function as one of several interacting proteins involved in anchoring F-actin to the membrane. Defects in VCL are the cause of cardiomyopathy dilated type 1W. Dilated cardiomyopathy is a disorder characterized by ventricular dilation and impaired systolic function, resulting in congestive heart failure and arrhythmia. Multiple alternatively spliced transcript variants have been found for this gene, but the biological validity of some variants has not been determined. [provided by RefSeq, Jul 2008] |
| <b>Protein Families:</b> | Druggable Genome  |
| <b>Protein Pathways:</b> | Adherens junction, Focal adhesion, Leukocyte transendothelial migration, Regulation of actin cytoskeleton   |

### Product images:



Coomassie blue staining of purified VCL protein (Cat# [TP304576]). The protein was produced from HEK293T cells transfected with VCL cDNA clone (Cat# [RC204576]) using MegaTran 2.0 (Cat# [TT210002]).